



**LIBERTY.**  
**FABRICS**

**FLOWER SHOW BOTANICAL JEWEL**

## A NOTE FROM LIBERTY

THE FLOWER SHOW quilting collections from LIBERTY FABRICS CELEBRATE the 'BEST IN SHOW', bringing together BOTANICAL DESIGNS from LIBERTY'S ICONIC PRINT ARCHIVE. DRAWING INSPIRATION from the GLORY and TRADITION of CLASSIC BRITISH FLOWER SHOWS, the collection features DIVERSE FLOWER FORMS united in a CACOPHONY OF COLOUR, illustrating LIBERTY'S RICH HERITAGE OF FLORAL DESIGN.

FLOWER SHOW BOTANICAL JEWEL transports us to a MAGICAL GARDEN OASIS, planted with the PRETTIEST SHADES OF ROSES, LAVENDER and DAHLIAS in RICH, VIVID COLOURS that resemble SEMI-PRECIOUS STONES. RICH TONES of RUBY RED compliment VIVID AMETHYST PURPLES and DEEP GARNET BURGUNDY punctuate subtle hints of SOFT PINK QUARTZ. The result is a JEWEL-LIKE COLOUR PALETTE guaranteed to bring any CRAFTING PROJECT into FULL BLOOM.

The collection is TRADITIONALLY SCREEN PRINTED onto LASENBY COTTON, a base SPECIFICALLY DEVELOPED for QUILTING and CRAFT PROJECTS.

Whilst every effort is made to ensure colour consistency, please be aware that due to the nature of the product and the print process, slight variances may occur in colour definition between this document and the fabric

**LIBERTY.**  
FABRICS

**COSMOS  
FIELD**

Lasenby Cotton  
Item Code: 01666815

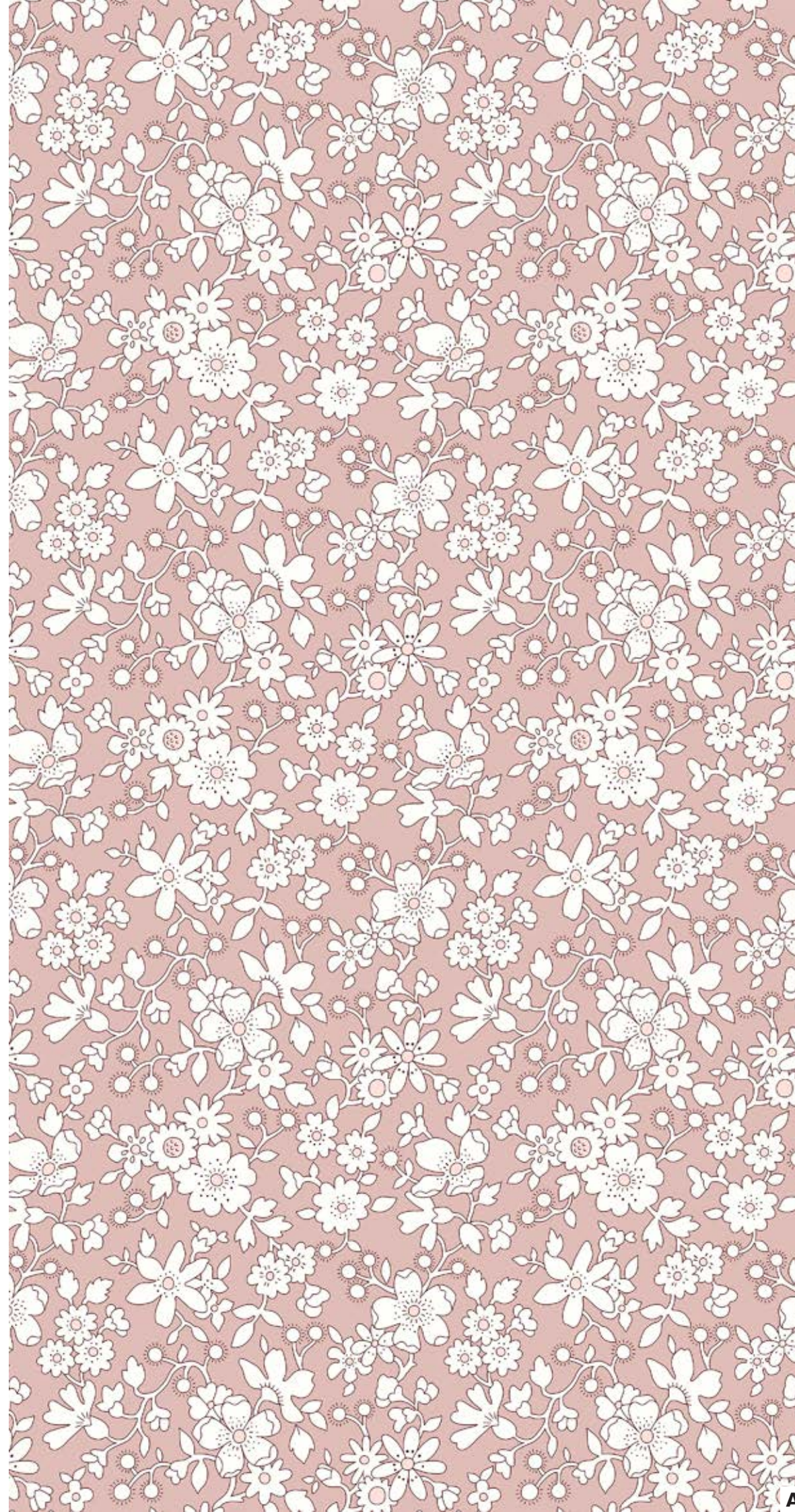
**LIBERTY.**  
FABRICS



# MADDSIE SILHOUETTE

Lasenby Cotton  
Item Code: 01666816

**LIBERTY.**  
FABRICS



A

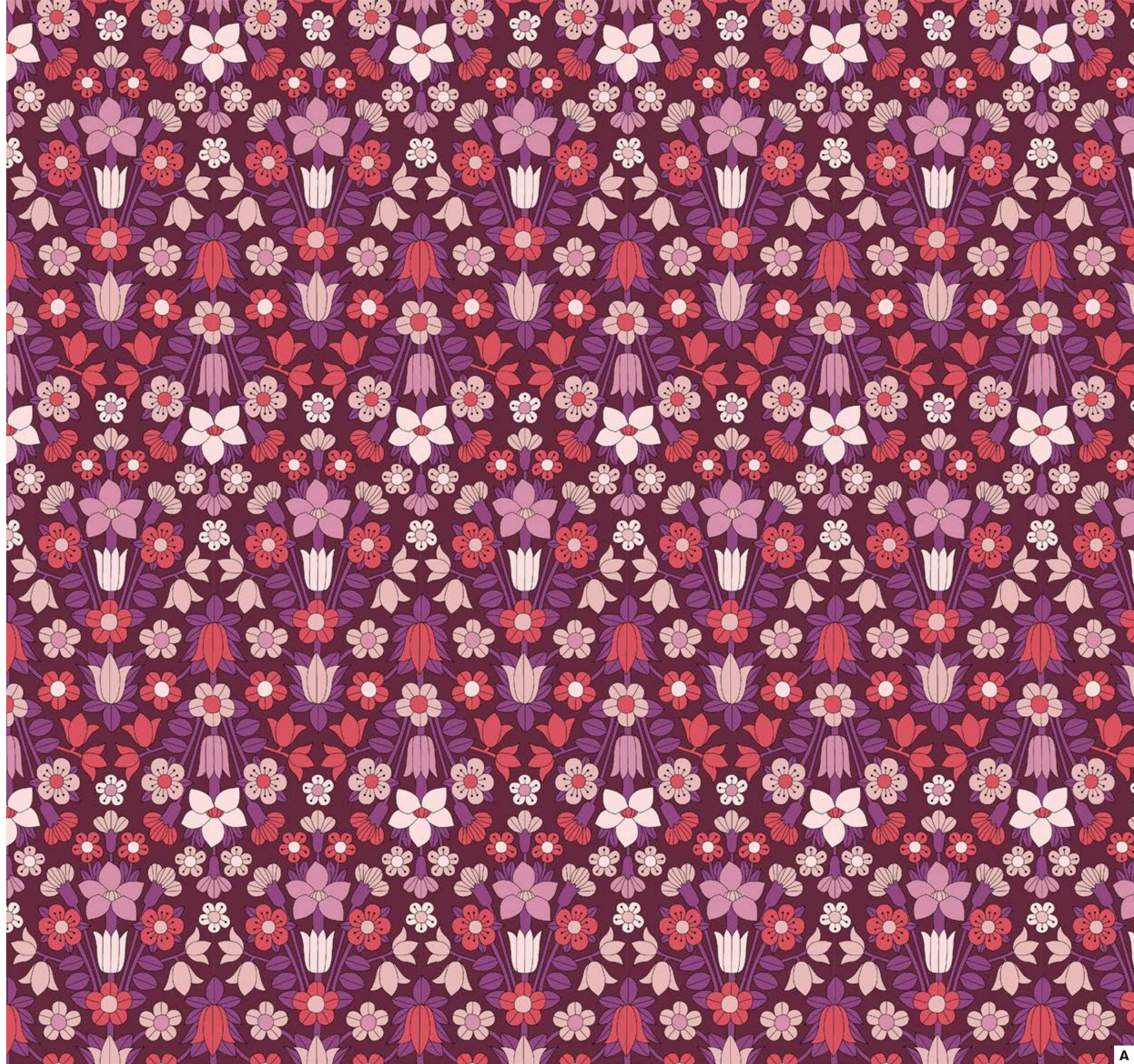
B

HAMPSTEAD  
MEADOW

Lasenby Cotton

Item Code: 01666817

LIBERTY.  
FABRICS

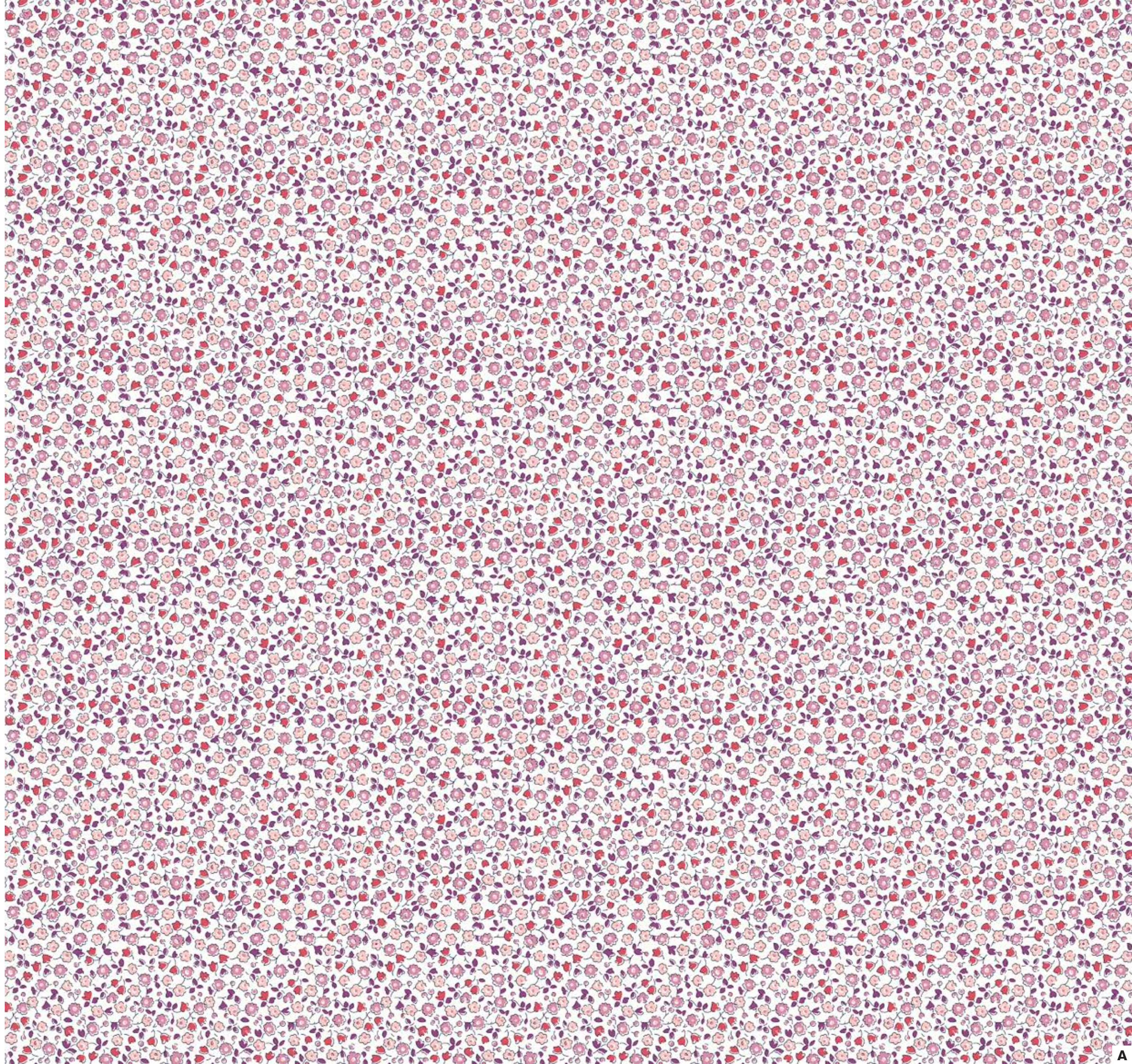


# SUFFOLK FIELD

Lasenby Cotton

Item Code: 01666818

**LIBERTY.**  
FABRICS

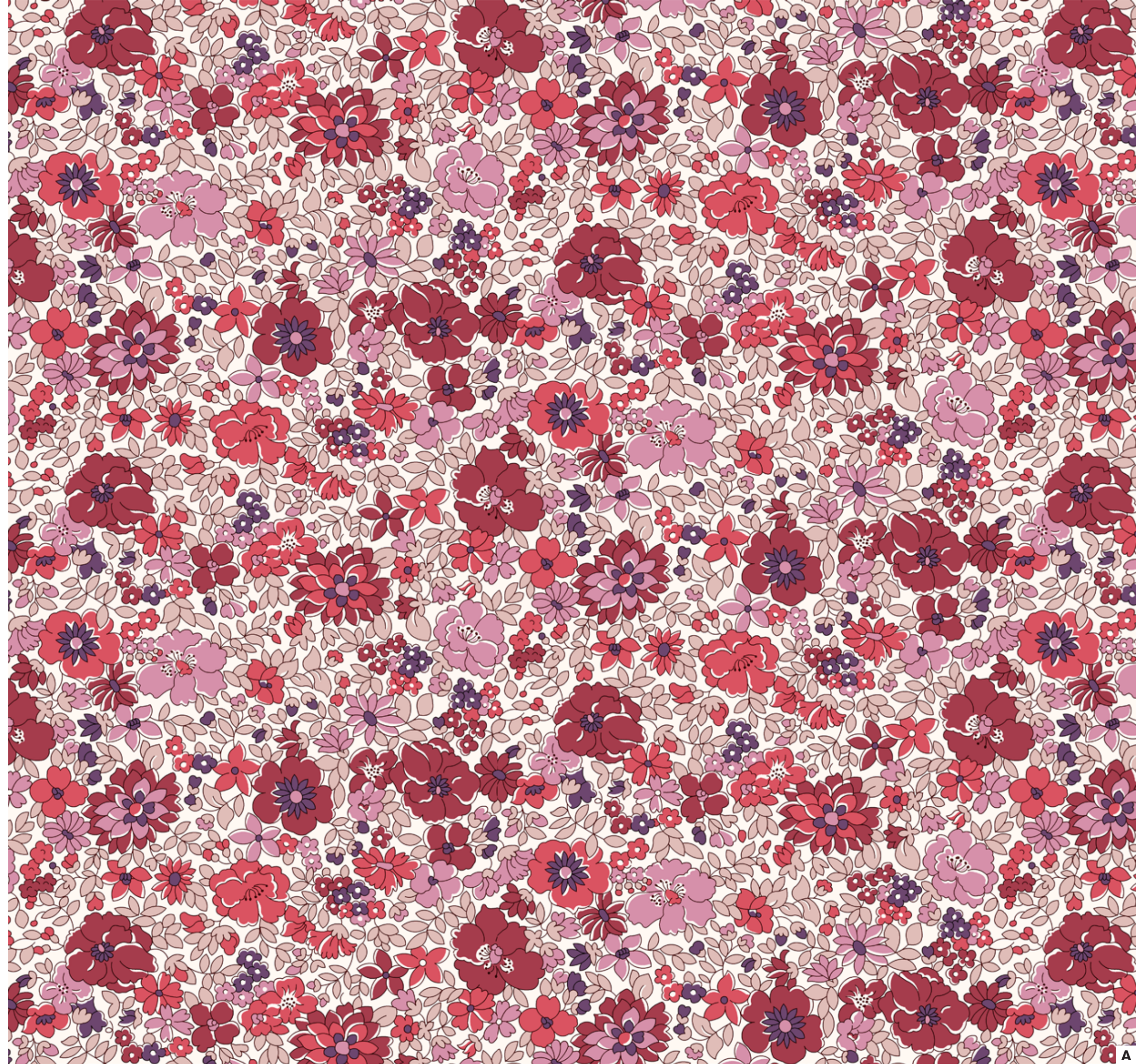


ARLEY  
PARK

Lasenby Cotton

Item Code: 01666819

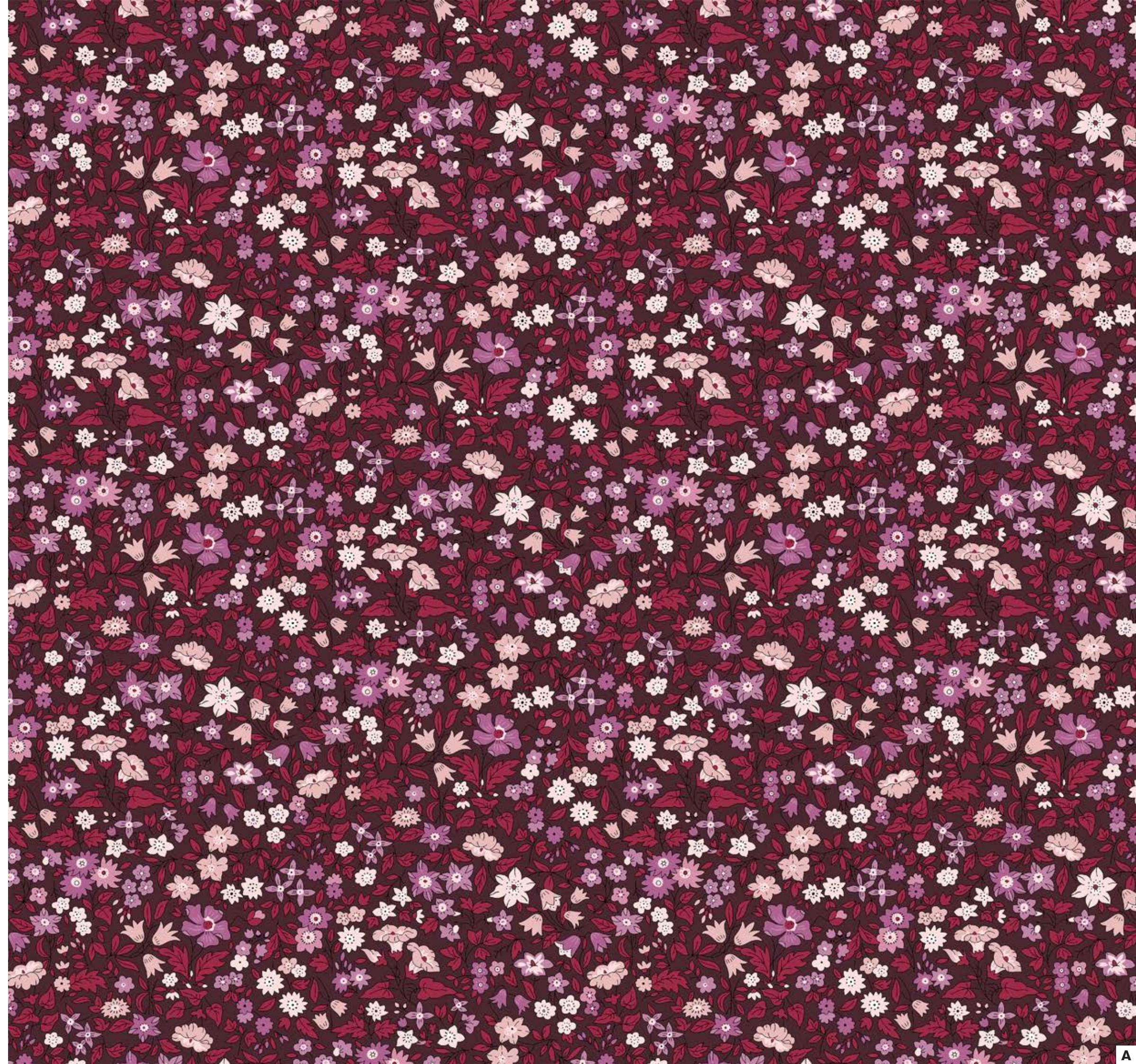
LIBERTY.  
FABRICS



# AVA MAY

Lasenby Cotton  
Item Code: 01666820

**LIBERTY.**  
FABRICS

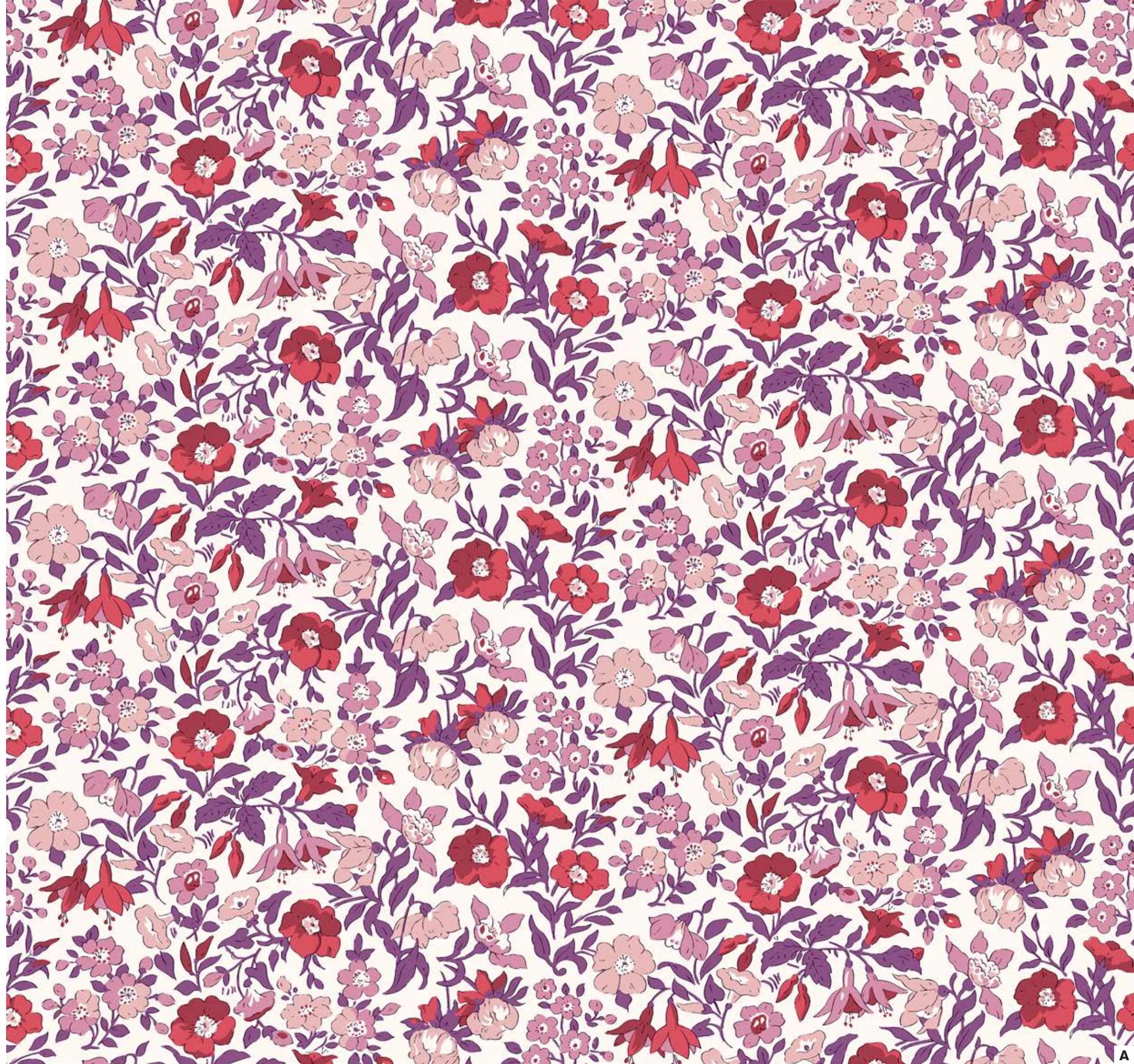




MAMIE  
FLOWER

Lasenby Cotton  
Item Code: 01666821

LIBERTY.  
FABRICS

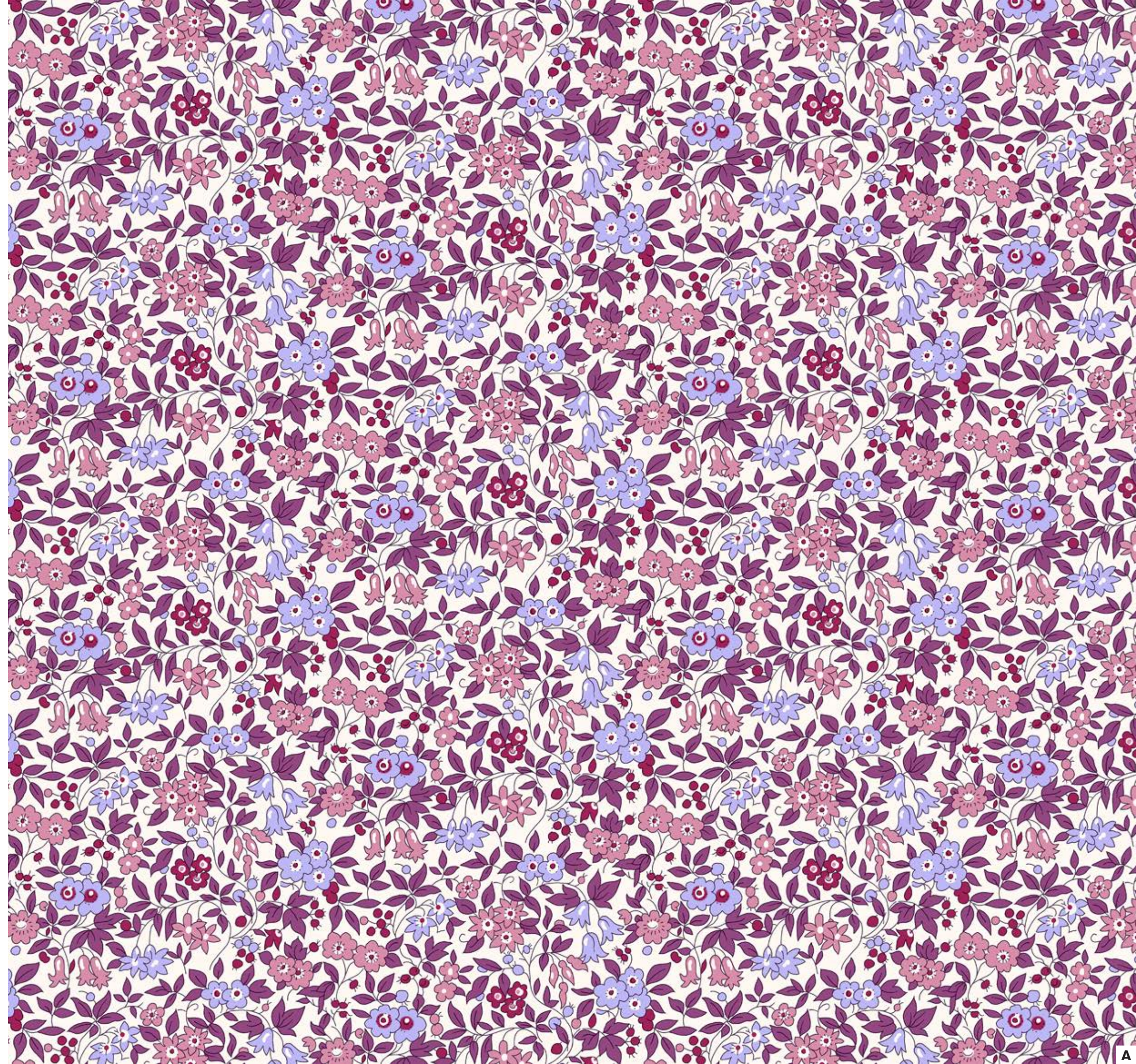


FORGET ME NOT  
BLOSSOM

Lasenby Cotton

Item Code: 01666823

LIBERTY.  
FABRICS

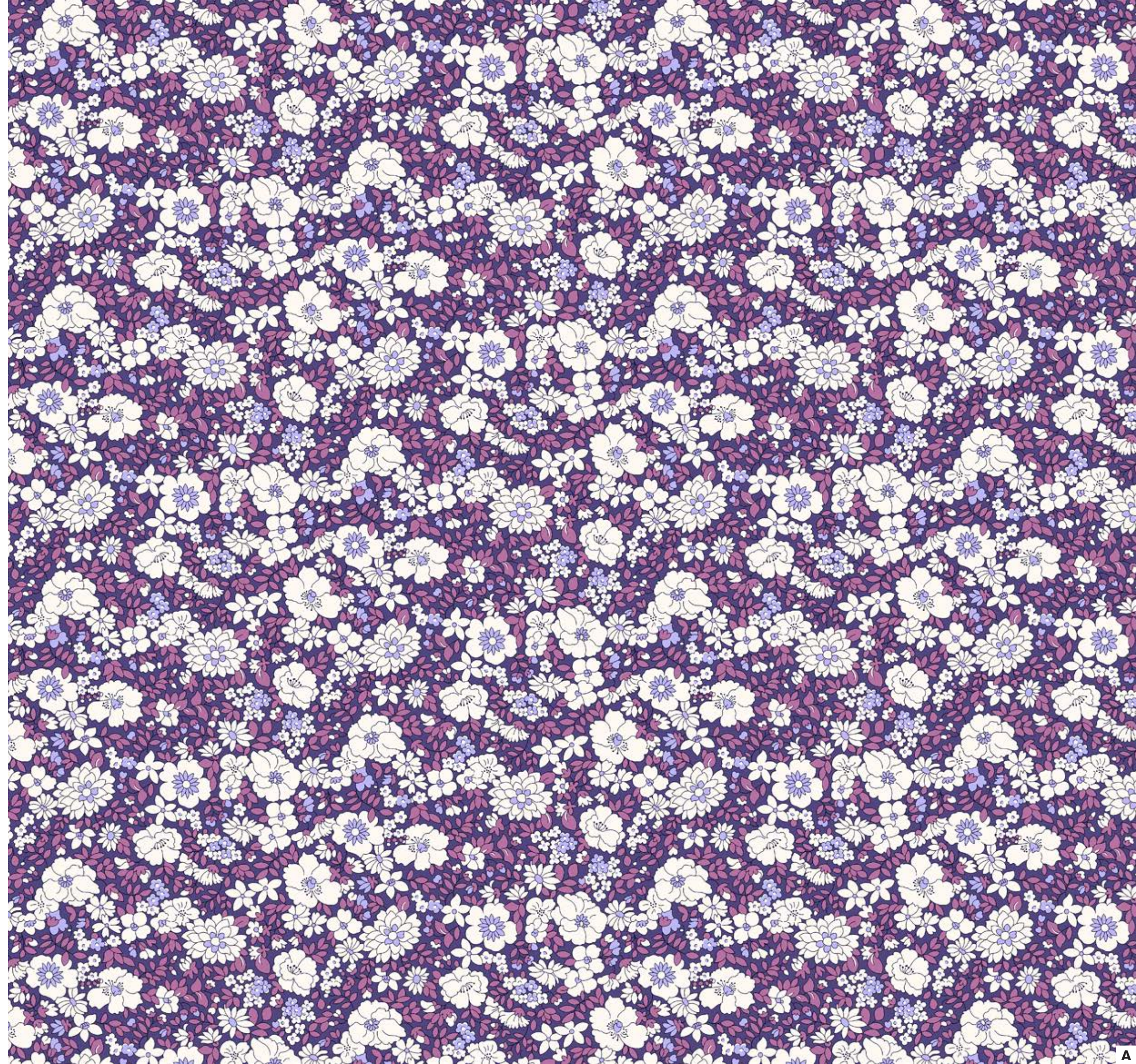


**ARLEY  
BLOSSOM**

Lasenby Cotton

Item Code: 01666824

**LIBERTY.**  
FABRICS



# KENSINGTON GARDENS

Lasenby Cotton

Item Code: 01666825

# LIBERTY.

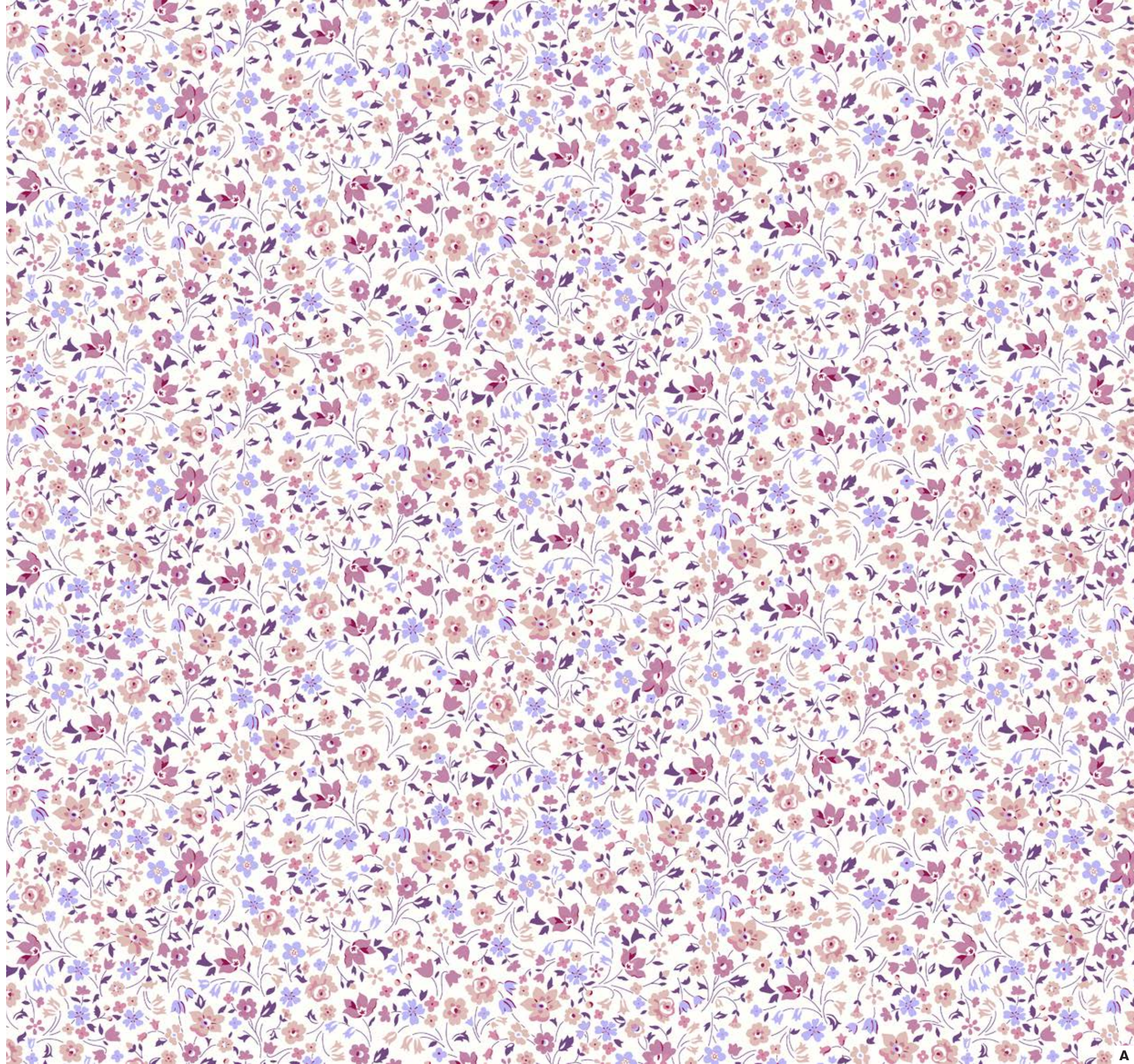
FABRICS



**KIMBERLEY AND  
SARAH**

Lasenby Cotton  
Item Code: 01666826

**LIBERTY.**  
FABRICS

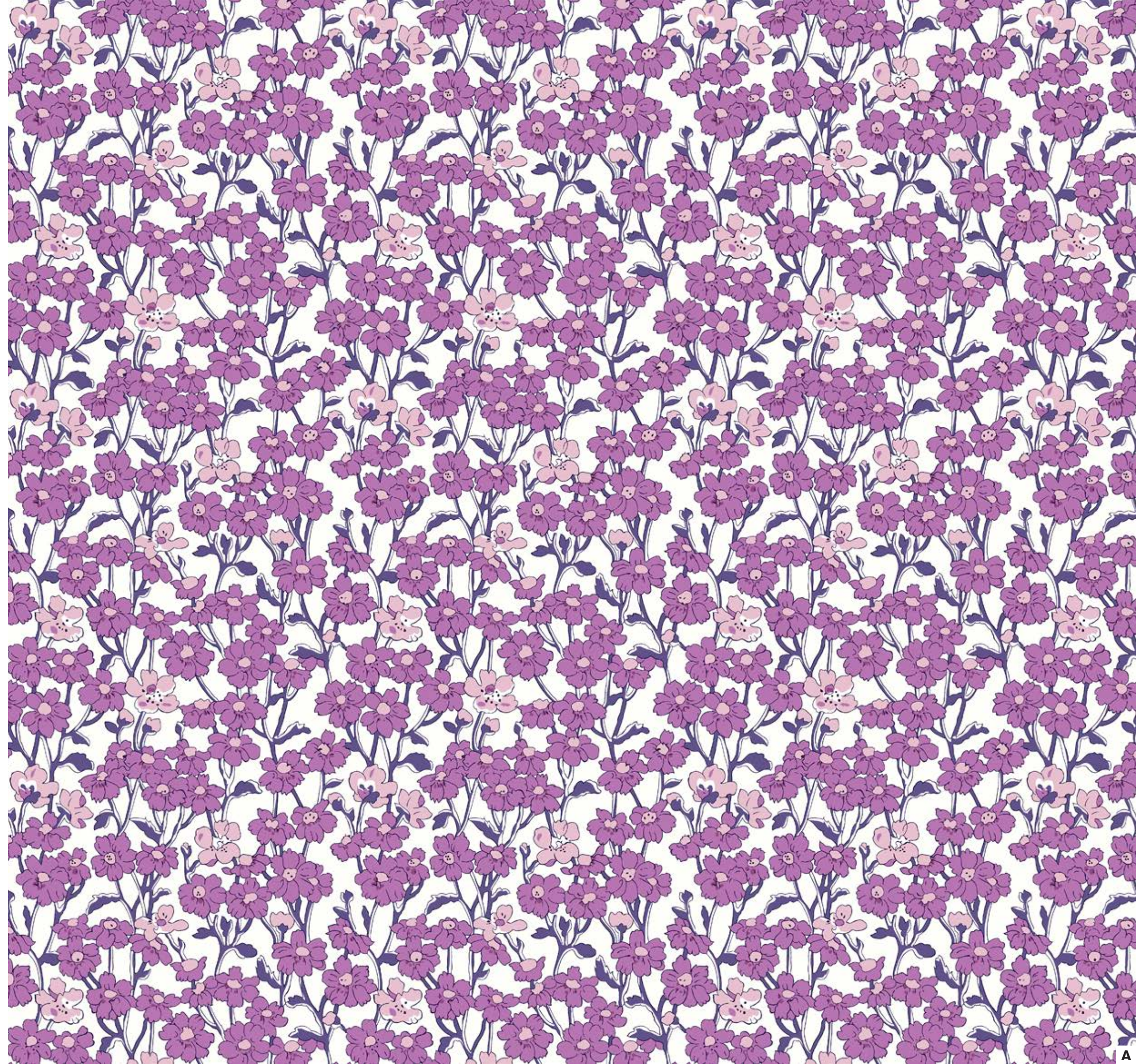


CHILTERN  
HILL

Lasenby Cotton

Item Code: 01666827

LIBERTY.  
FABRICS



# WILDFLOWER FIELD

Lasenby Cotton

Item Code: 01666828

# LIBERTY.

FABRICS



# HAMPTON SPRIG

Lasenby Cotton  
Item Code: 01666829

# LIBERTY.

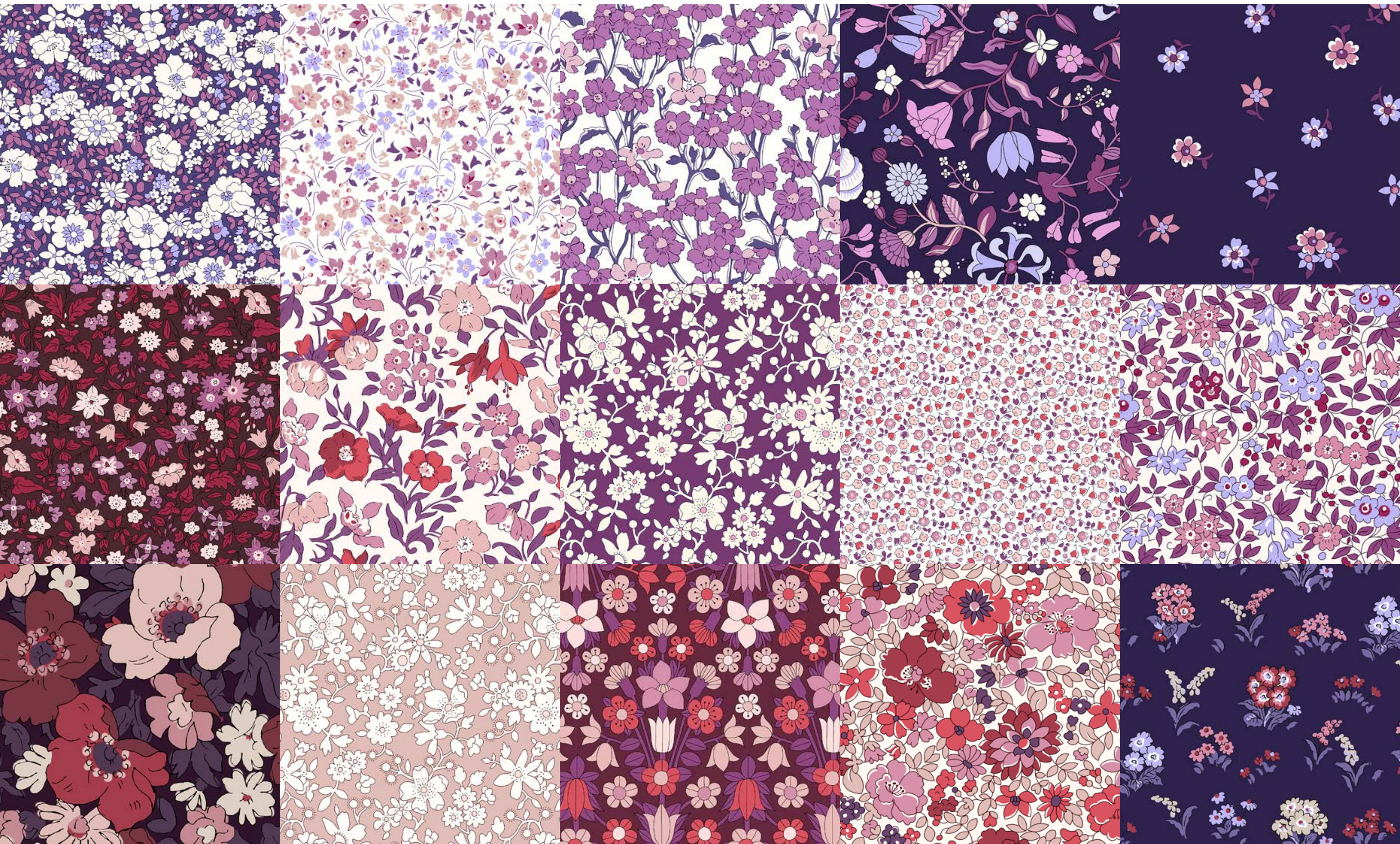
FABRICS





FLOWER SHOW BOTANICAL JEWEL

LIBERTY.  
FABRICS



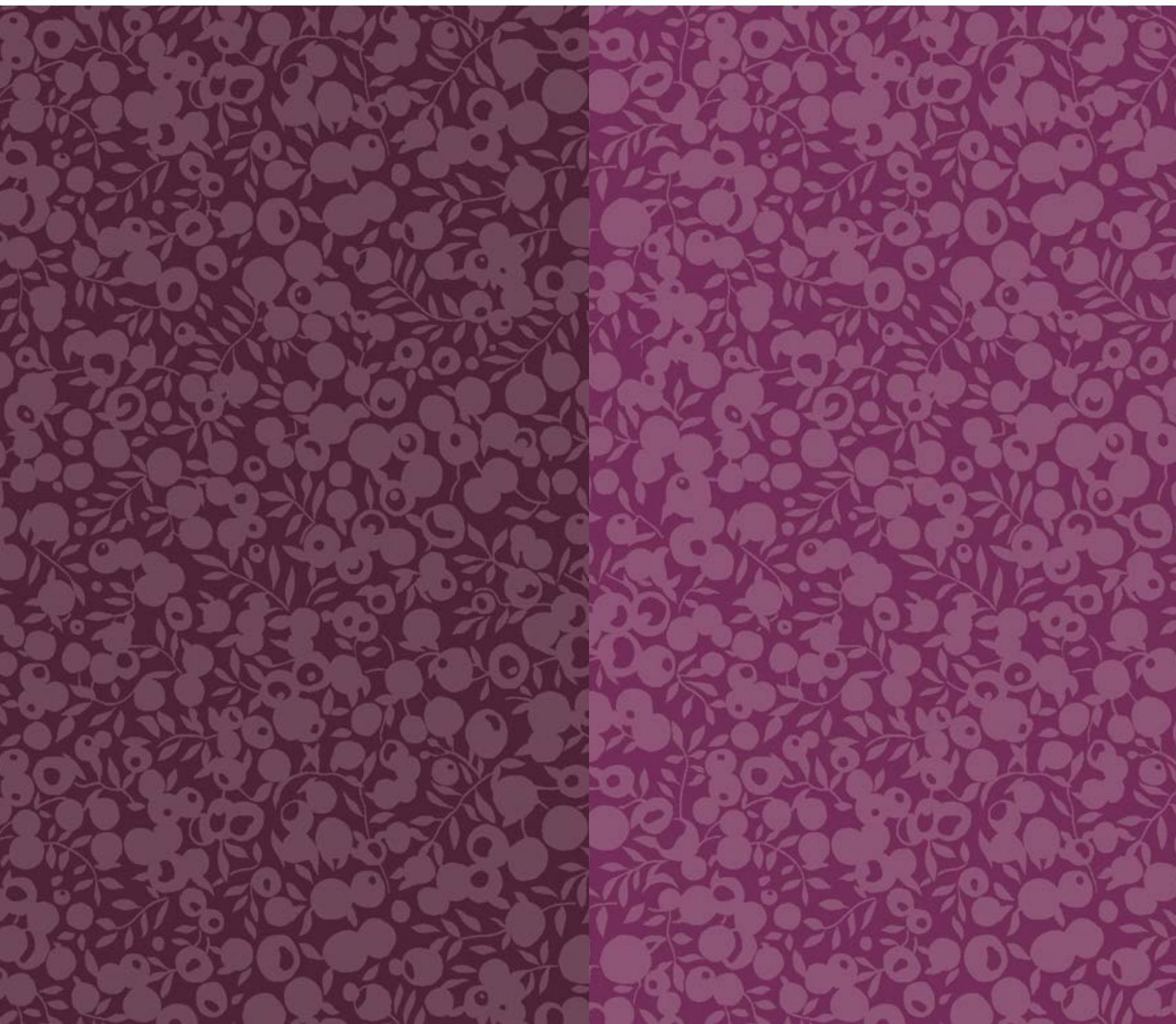
# RECOMMENDED BLENDERS

**LIBERTY.**  
FABRICS

## WILTSHIRE SHADOW

BLACKCURRANT  
01666527A

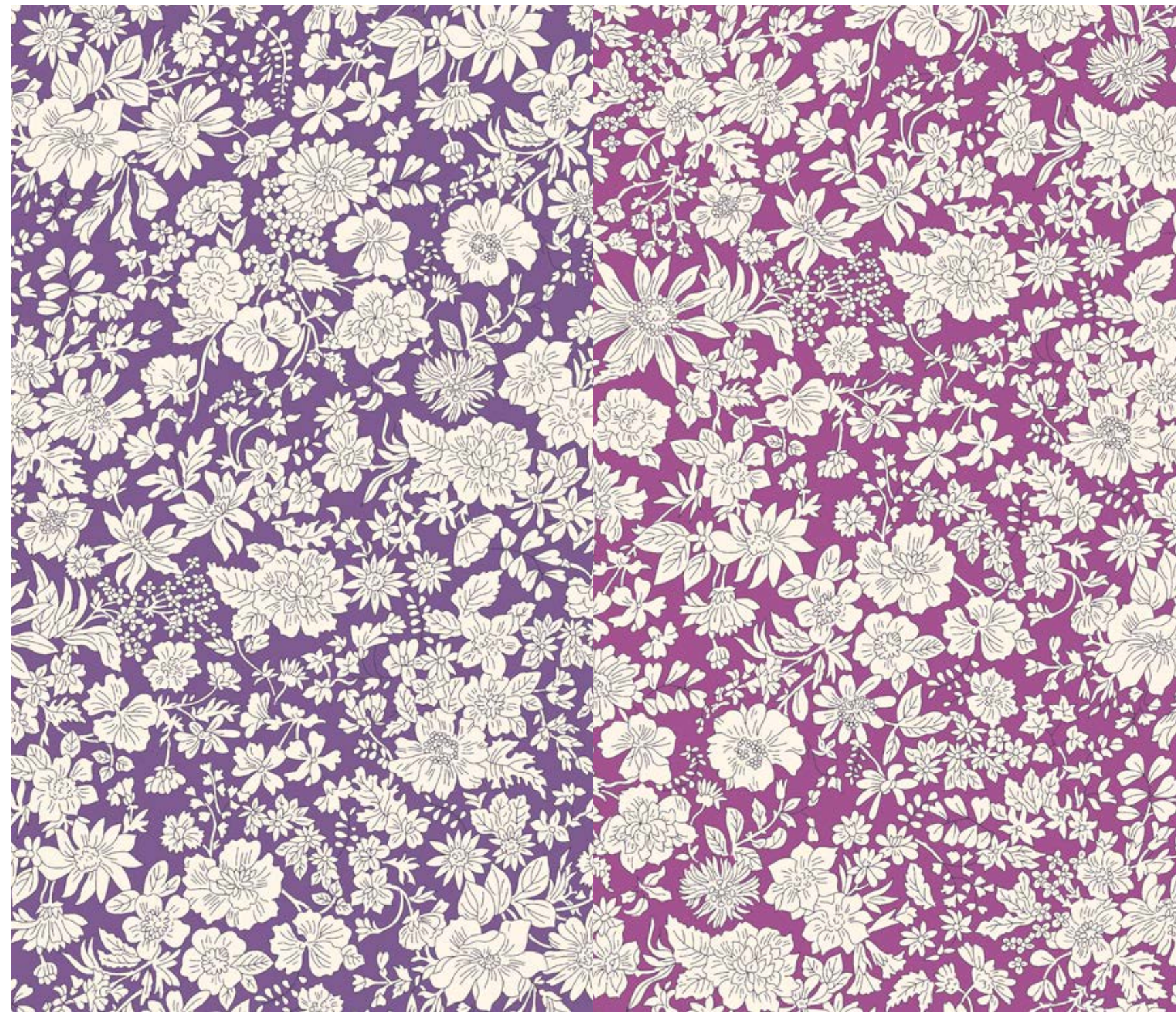
JEWEL PURPLE  
01666532A



## EMILY BELLE

DAMSON  
01666437A

CROCUS  
01666436A



# FLOWER SHOW BOTANICAL JEWEL

## PRE-CUT BUNDLES

LIBERTY.  
FABRICS



0166FQ-AW22FS-A



0166FQ-AW22FS-B



0166FQ-AW22FS-C



For all sales enquires please contact  
Pauline Meagher

[PMEAGHER@LIBERTYLONDON.COM](mailto:PMEAGHER@LIBERTYLONDON.COM)

**LIBERTY.**  
FABRICS

