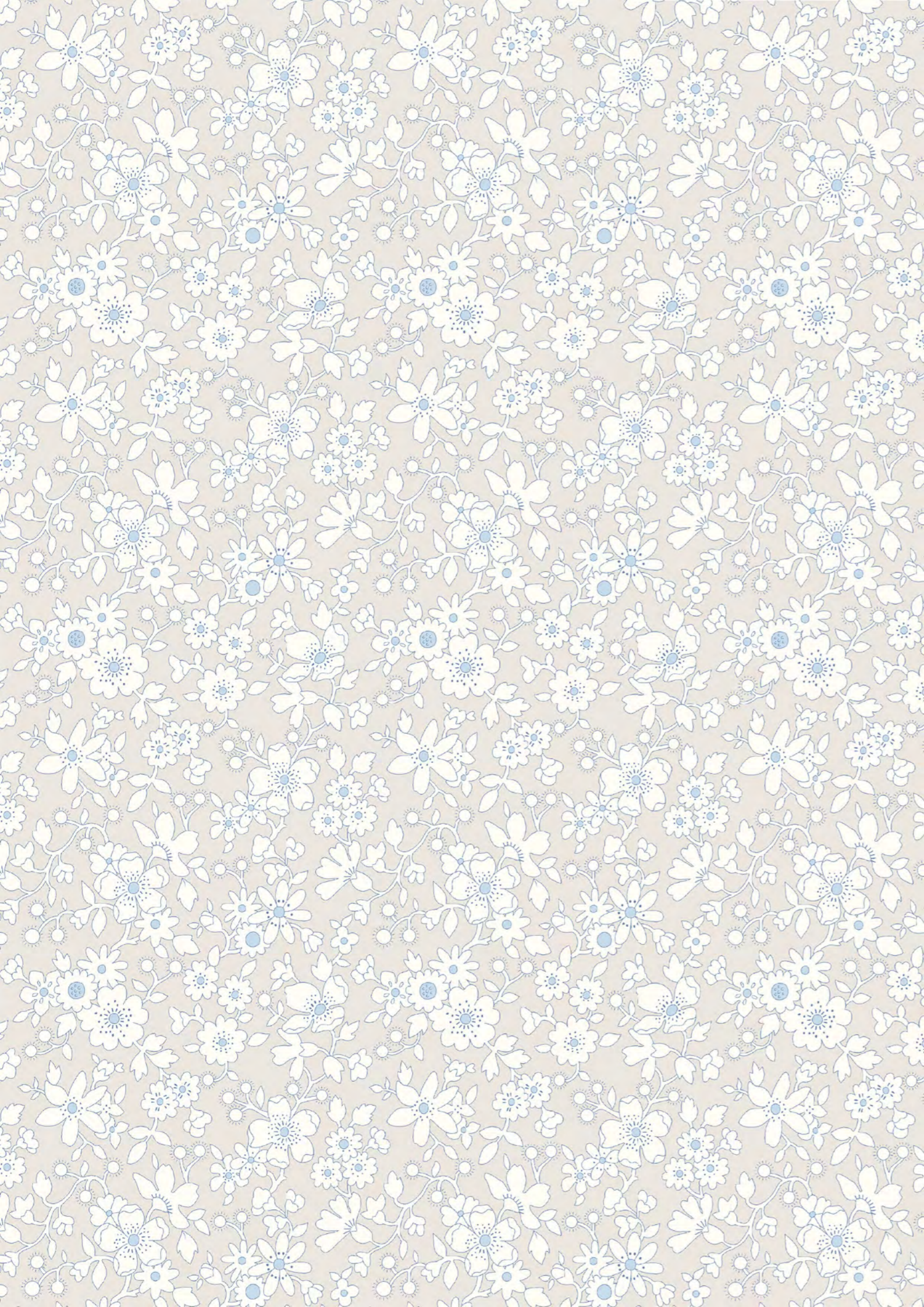




FLOWER SHOW
COASTAL WALK

LIBERTY.
FABRICS



A NOTE FROM LIBERTY

The Flower Show quilting collections from Liberty Fabrics celebrate the ‘Best in Show’, bringing together botanical designs from across Liberty’s iconic print archive. Drawing inspiration from the glory and tradition of classic British flower shows, the collection features diverse flower forms united in a cacophony of colour, illustrating Liberty’s rich heritage of floral design.

Flower Show Coastal Walk captures the glory of an everchanging coastline – as light sky blues and chambrays graduate into deep ultramarine and indigo, punctuated by flashes of green and chartreuse yellow. Grounded by neutral pebble hues, the result is a sophisticated and tonal palette guaranteed to bring any crafting project into full bloom.

The collection is traditionally screen printed onto Lasenby cotton, a base specifically developed for quilting and craft projects.

LIBERTY.
FABRICS

Whilst every effort has been made to ensure colour consistency, please be aware that due to the nature of the product and the print process, slight variances may occur in colour definition between this document and the fabric.

© 2021 Liberty Fabrics. All Rights Reserved.



COSMOS FIELD

Originally designed for Liberty in the 1930s and later reprinted in 1969 at the brand's Merton Print Works, Cosmos Field is a typical Liberty floral print at a slightly larger scale – featuring outlined anemones and daisies arranged over a dense leafy ground.

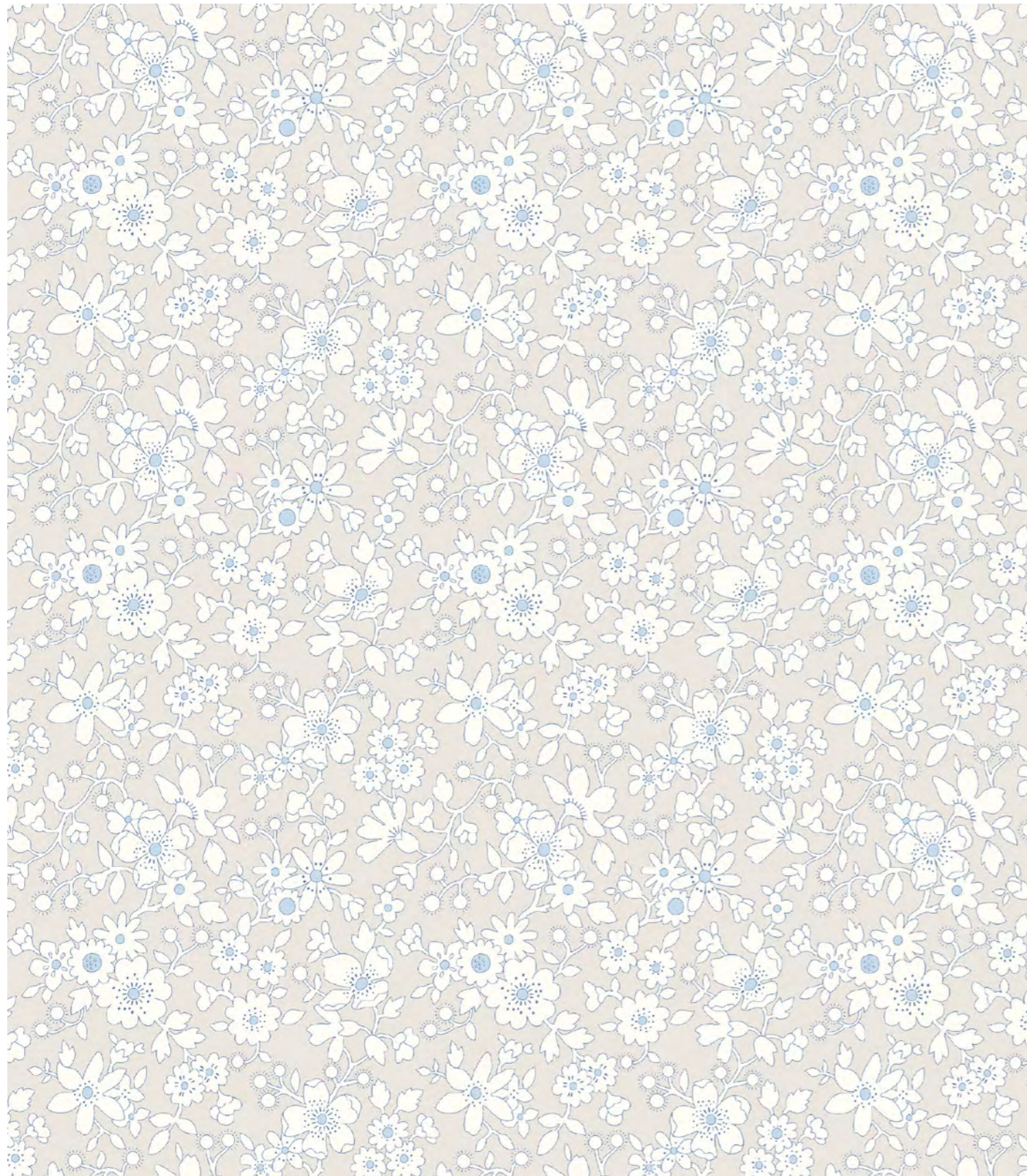
Lasenby Cotton Item Code. 01666465A



FORGET ME NOT BLOSSOM

Tiny berries and stylised flowers including forget-me-nots, daisies and bell flowers, create a dense trailing pattern. Forget Me Not Blossom is based on a 1950's design from the Liberty archive.

Lasenby Cotton Item Code. 01666466A



MADDSIE SILHOUETTE

A revised version of a much-loved design originally created for the seasonal SS 2009 collection. This pattern of mixed monochrome flowers on coloured ground, was inspired by the Classic Liberty pattern 'Capel', with its outlined trails of apple blossom.

Lasenby Cotton Item Code. 01666467A



MARY ROSE

This romantic rose pattern was hand-painted for Liberty in 1997 and has since been included in various of our Classic collections during the early 2000's. Timeless and elegant, the delicate watercolour roses evoke a sense of comfort, familiarity and nostalgia.

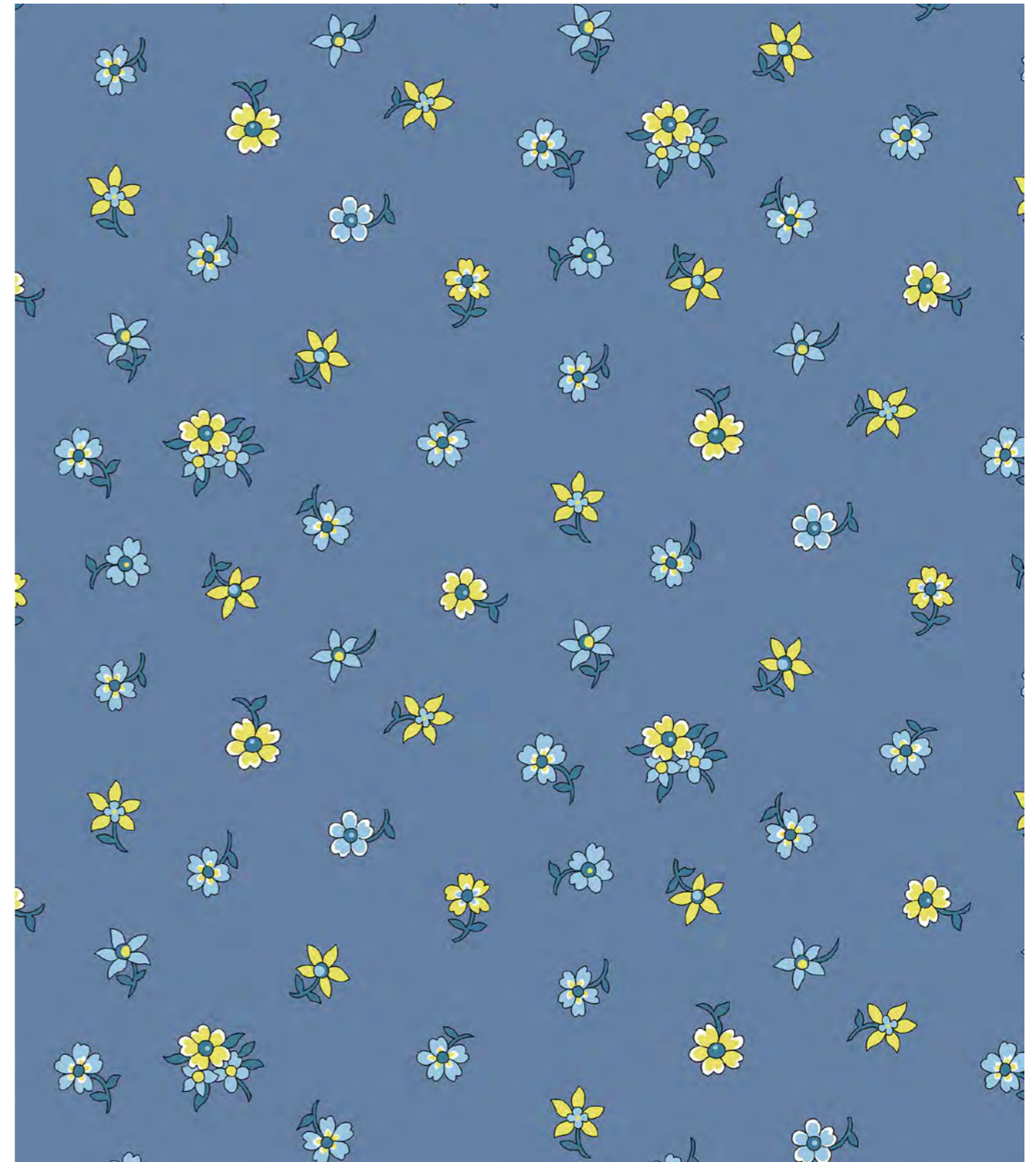
Lasenby Cotton Item Code. 01666468A



HAMPSTEAD MEADOW

Taking inspiration from quintessential Arts & Crafts motifs, Hampstead Meadow is arranged in a mirrored layout, featuring symmetrical and elegant stylised flowers. Originally created for Liberty in 1964, this striking pattern has been redrawn and recoloured in a bold and playful palette.

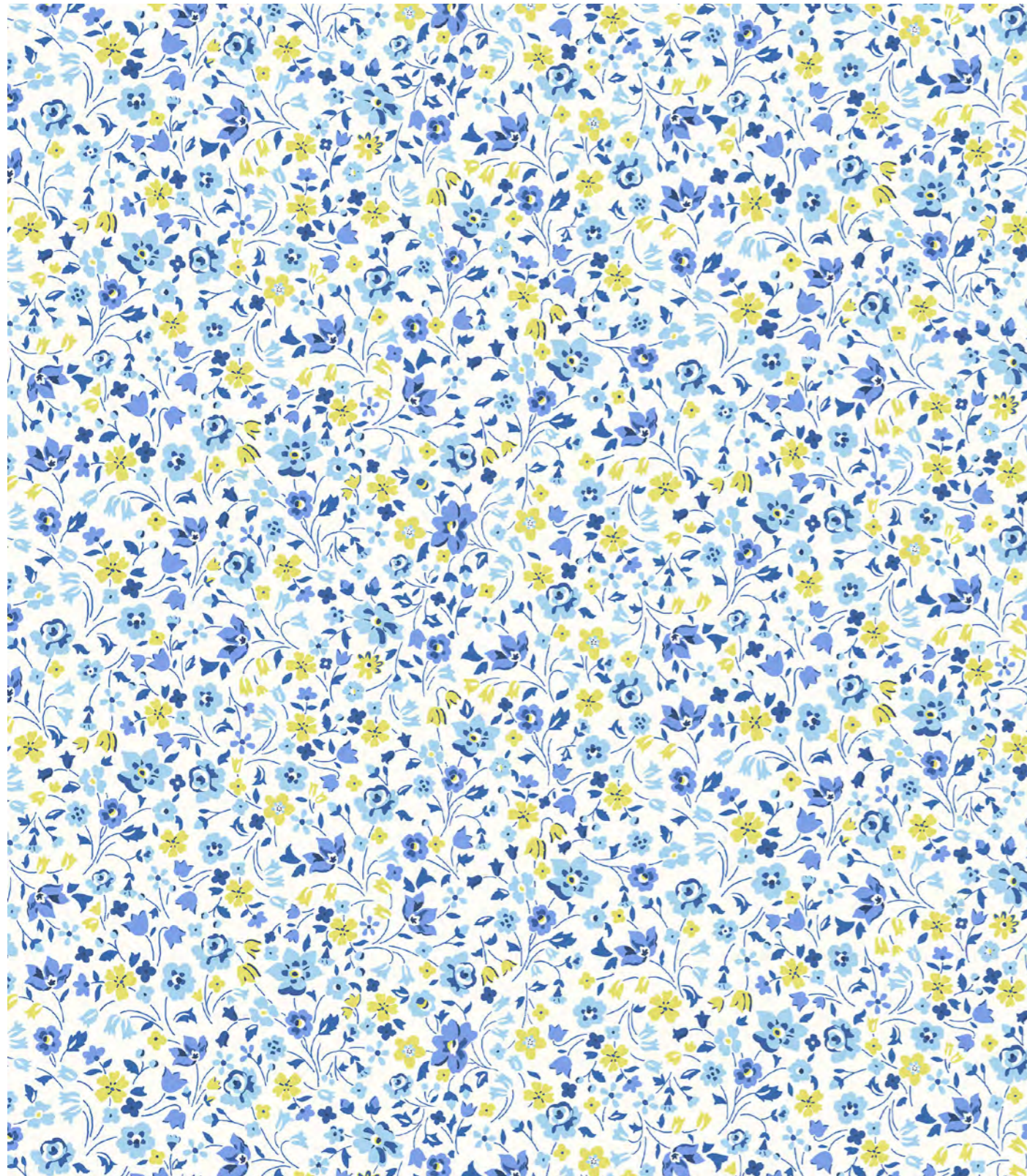
Lasenby Cotton Item Code. 01666469A



HAMPTON SPRIG

Originally designed for Liberty in 1969, this charming print has been revived for the Flower Show quilting collections. It features stylised floral sprigs arranged in a multidirectional layout on a coloured ground.

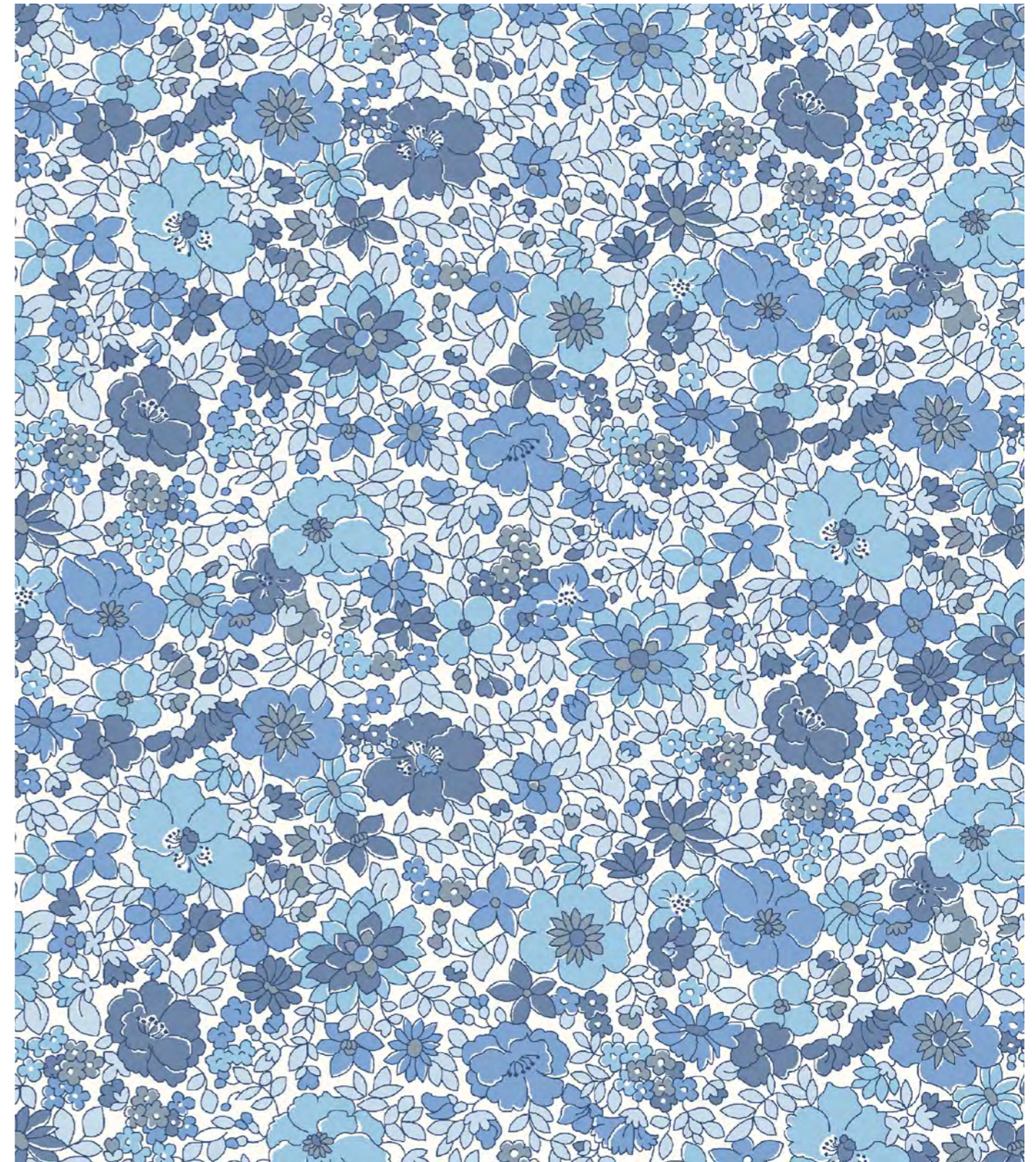
Lasenby Cotton Item Code. 01666470A



KIMBERLEY AND SARAH

The inspiration behind Kimberley & Sarah was 18th century muslins, by researching various beautiful muslin dresses, skirts and aprons it became apparent that small floral bouquets were a reoccurring theme so the design was based on a small floral from the Liberty archive which was then hand drawn and painted with gouache.

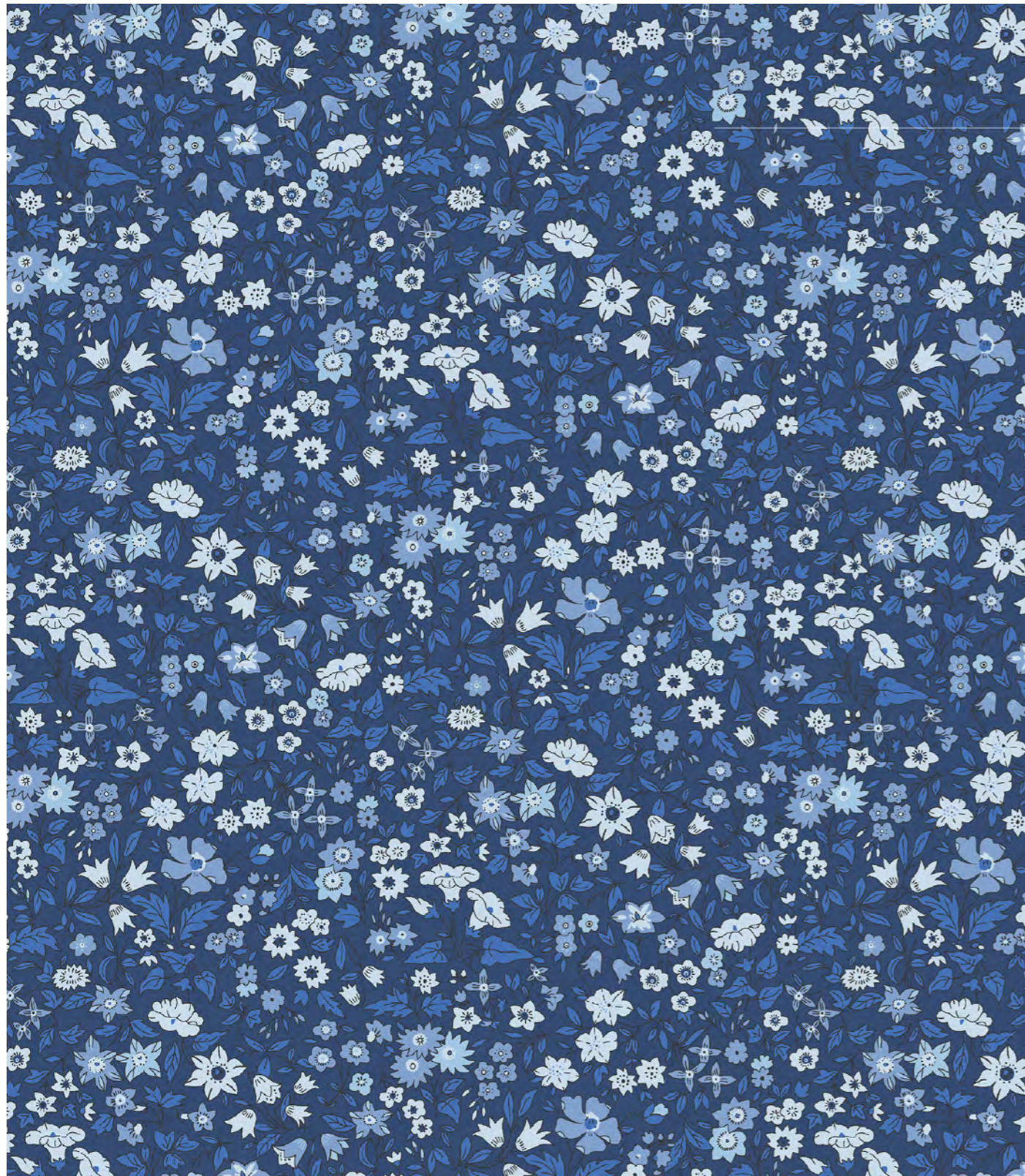
Lasenby Cotton Item Code. 01666471A



ARLEY PARK

First created in 1966 and included in Liberty Classics collections during the early 1980s, Arley Park features a harmonious composition of block-coloured flowers, drawn with a very fine outline.

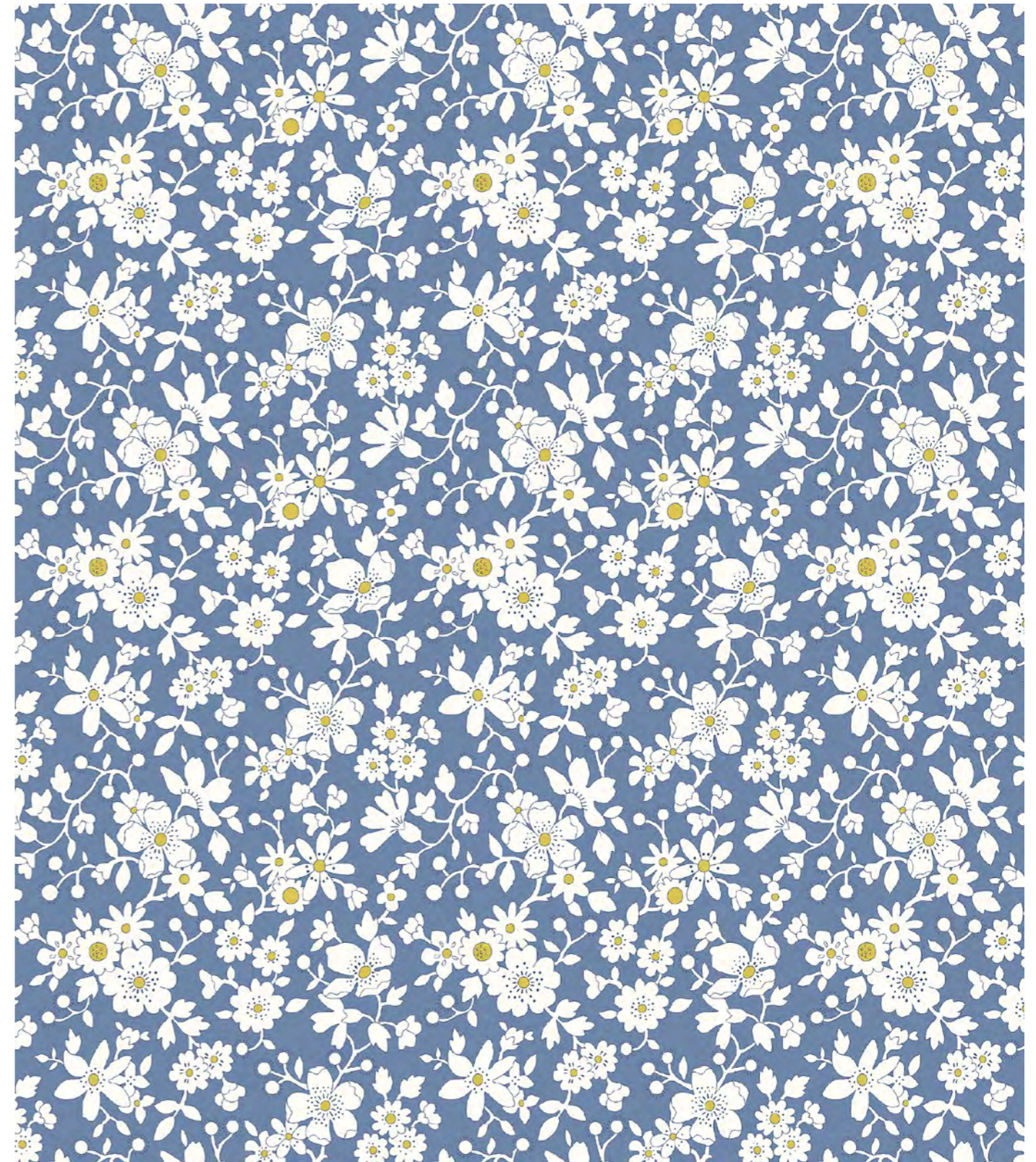
Lasenby Cotton Item Code. 01666472A



AVA MAY

The original for this design dates back to the 1930's and is a typical example of a Liberty botanical. The small simplified flowers were carefully redrawn by the Liberty design studio, to revive and refresh this pretty heritage print.

Lasenby Cotton Item Code. 01666473A



MADDIE SILHOUETTE

A revised version of a much-loved design originally created for the seasonal SS 2009 collection. This pattern of mixed monochrome flowers on coloured ground, was inspired by the Classic Liberty pattern 'Capel', with its outlined trails of apple blossom.

Lasenby Cotton Item Code. 01666467B



WILDFLOWER FIELD

Featuring a stunning botanical display of pansies, bell flowers, chrysanthemums and honeysuckle, this joyous pattern celebrates the beauty and diversity of simple flower forms. Based on a hand-painted artwork discovered in the Liberty archive, Wildflower Field is guaranteed to bring any crafting project into full bloom.

Lasenby Cotton Item Code. 01666474A



MAMIE FLOWER

Created in 1980, this design was heavily inspired by typical Liberty patterns of the 1930s. With its pretty fuchsias, roses and primroses, Mamie is a true community favourite, featuring in our Classics ranges for over 20 years. Reintroduced recently in fresh new colour palettes, this quintessential floral now also belongs to our Lasenby quilting collections.

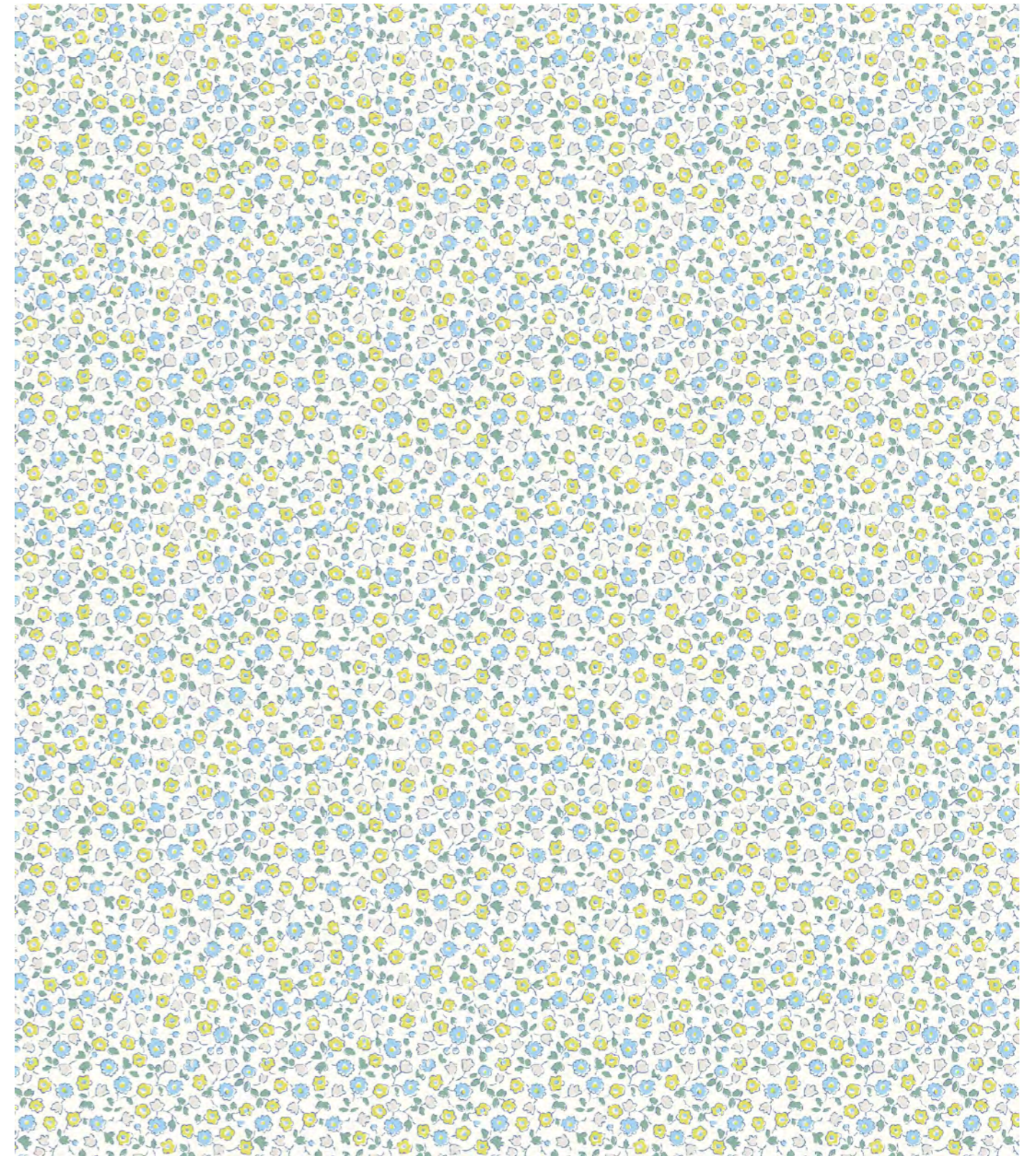
Lasenby Cotton Item Code. 01666475A



CHILTERN HILL

This subtle and pretty botanical was reworked from a 1930's Liberty print. Drawn in a very typical Liberty style, it includes forget-me-nots and pimpernels arranged as a trail layout.

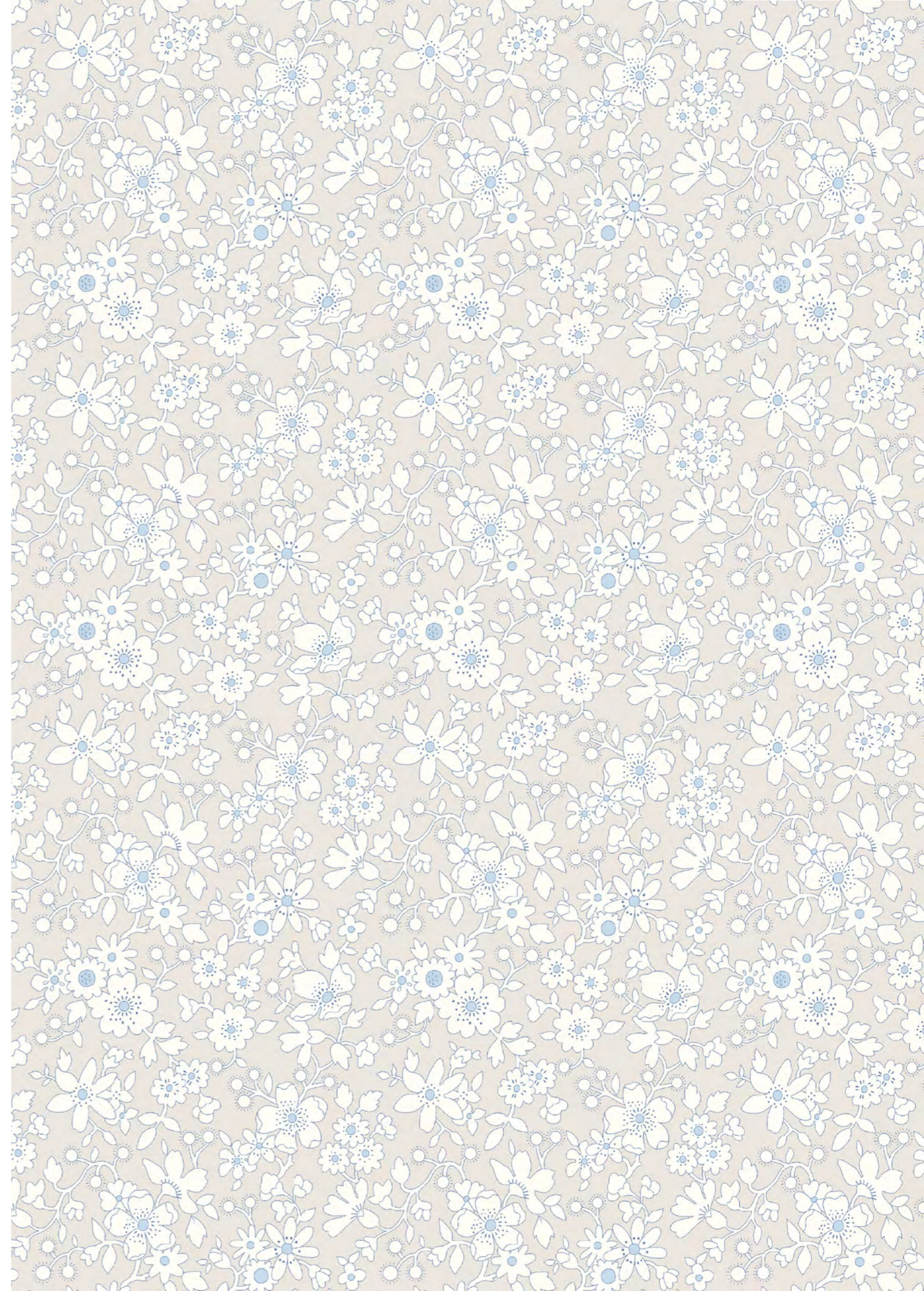
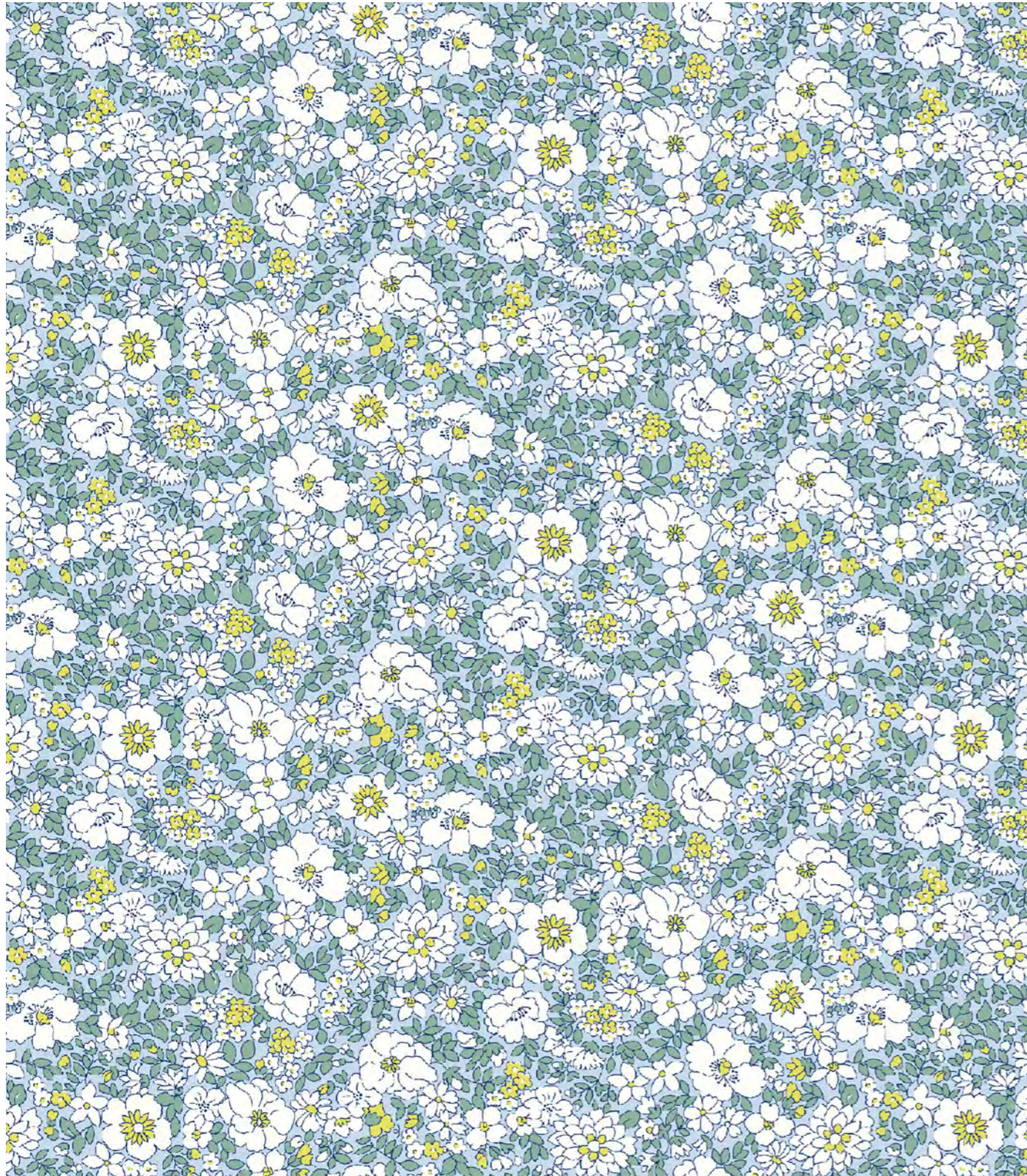
Lasenby Cotton Item Code. 01666476A



SUFFOLK FIELD

The earliest version of this print appears in one of Liberty's archival books dating back to 1939. Revived during the 1970's and recently redrawn for our Flower Show quilting collection, this design demonstrates the timeless appeal of a typical Liberty ditsy floral.

Lasenby Cotton Item Code. 01666477A



ARLEY BLOSSOM

A smaller scale version of Arley Park, this design was first created in 1966 and included in Liberty Classics collections of the early 1980s – Arley Blossom features a harmonious composition of block-coloured flowers, drawn with a very fine outline.

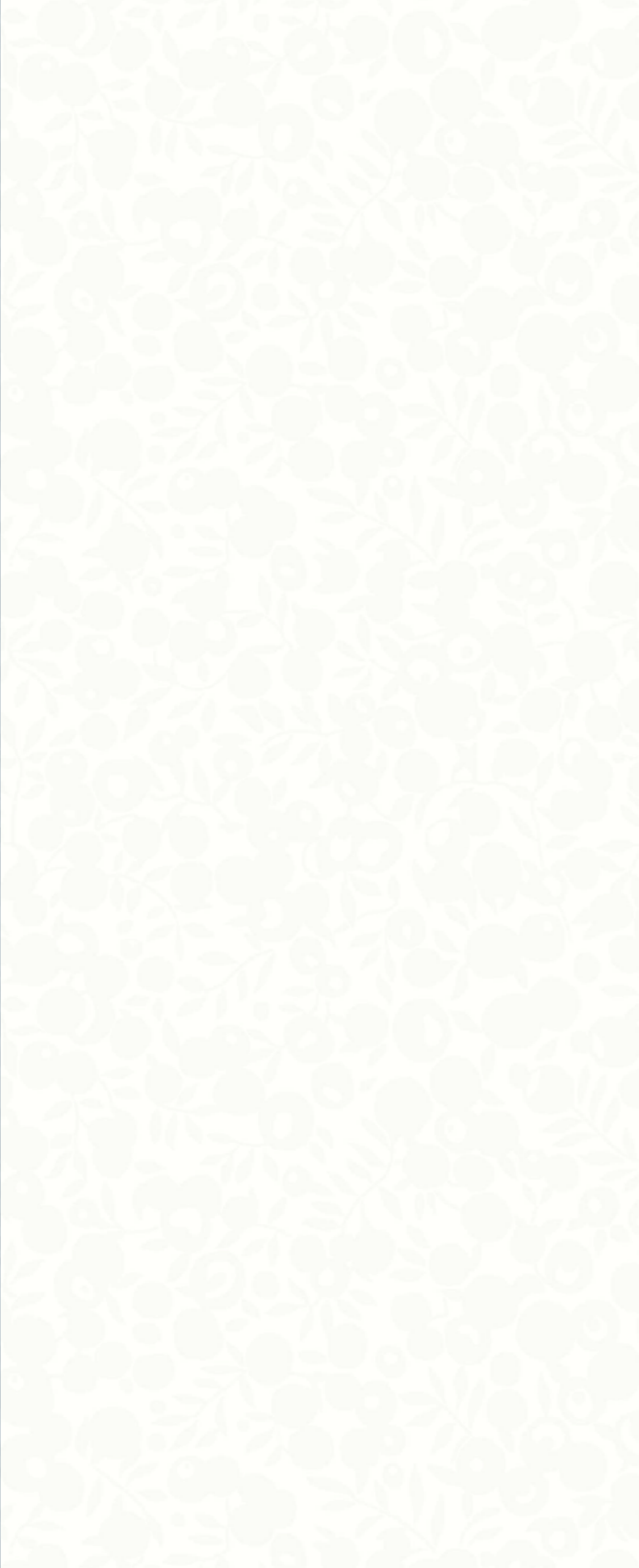
Lasenby Cotton Item Code. 01666478A

RECOMMENDED WILTSHIRE SHADOW



INDIGO

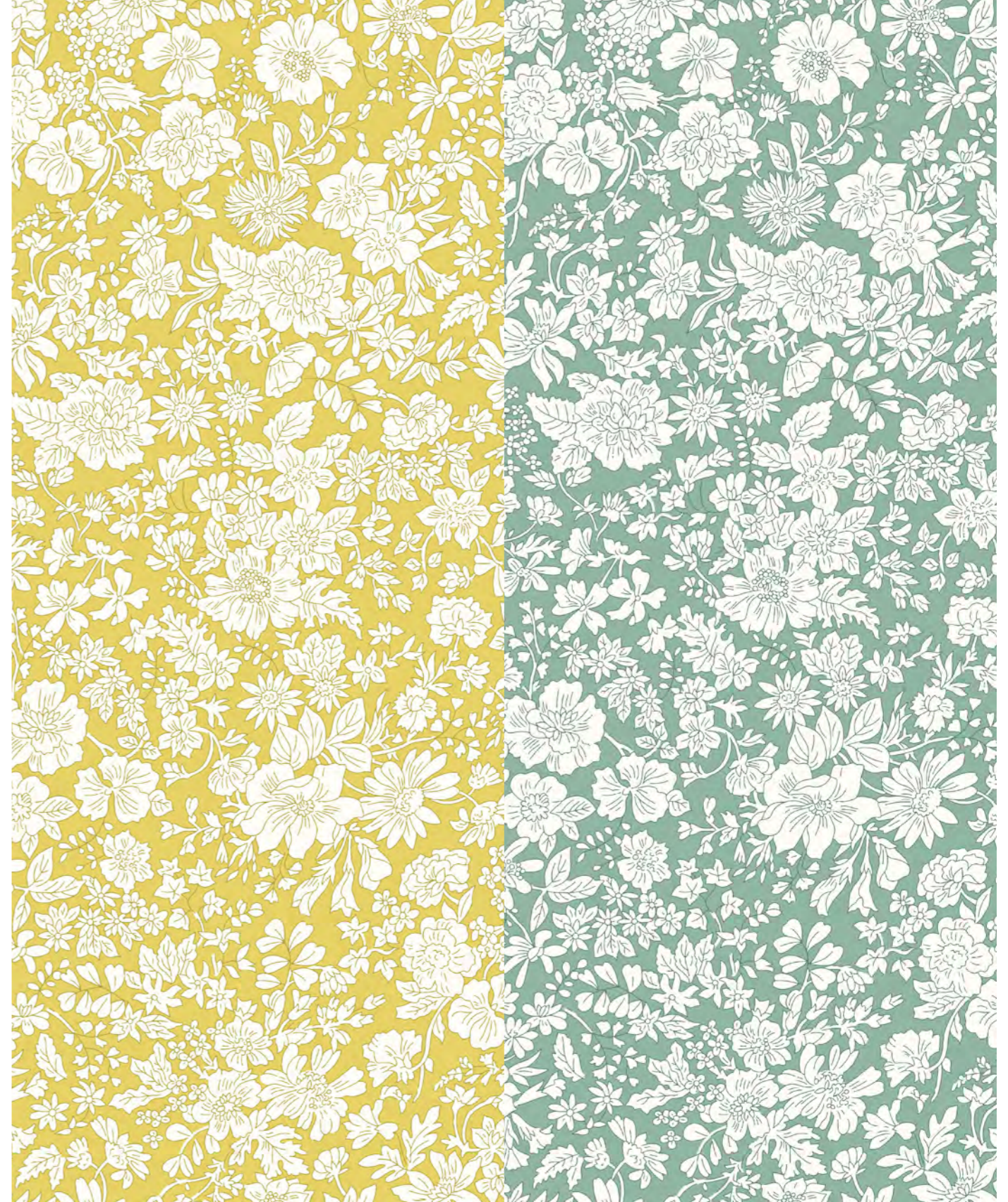
Item Code. 4775702Z



WHITE

Item Code. 04775715Z

RECOMMENDED EMILY BELLE



LIME

Item Code. 01666411A

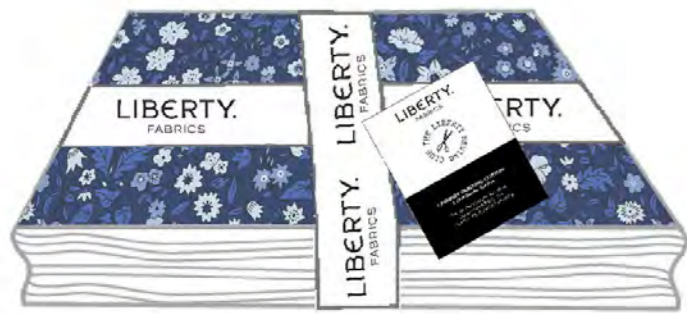
OLIVE LEAF

Item Code. 01666412A

FLOWER SHOW MIDNIGHT GARDEN PRE-CUT BUNDLES



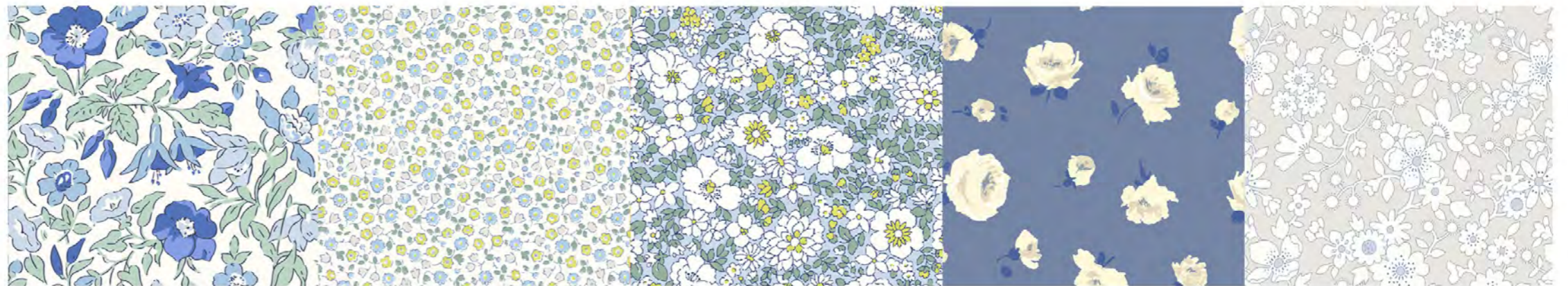
0166FQ-FSCW-A



0166FQ-FSCW-B



0166FQ-FSCW-C







FLOWER SHOW
COASTAL WALK

LIBERTY.
FABRICS