

A
JANE AUSTEN'S
HOUSE

*Sense &
Sensibility*



If you loved our first Jane Austen fabric collection, you're going to love what we have in store for you next! Our new and special edition prints were taken directly from the original Jane Austen quilt.

Starting with *Sense and Sensibility*, we're releasing new prints and exclusive quilt kits that correspond with each of Jane Austen's six novels. Our one-of-a-kind keepsake quilt kit boxes are designed to look like a book and feature the fabric to make the quilt top and binding. Collect all six to create a masterpiece of your own.

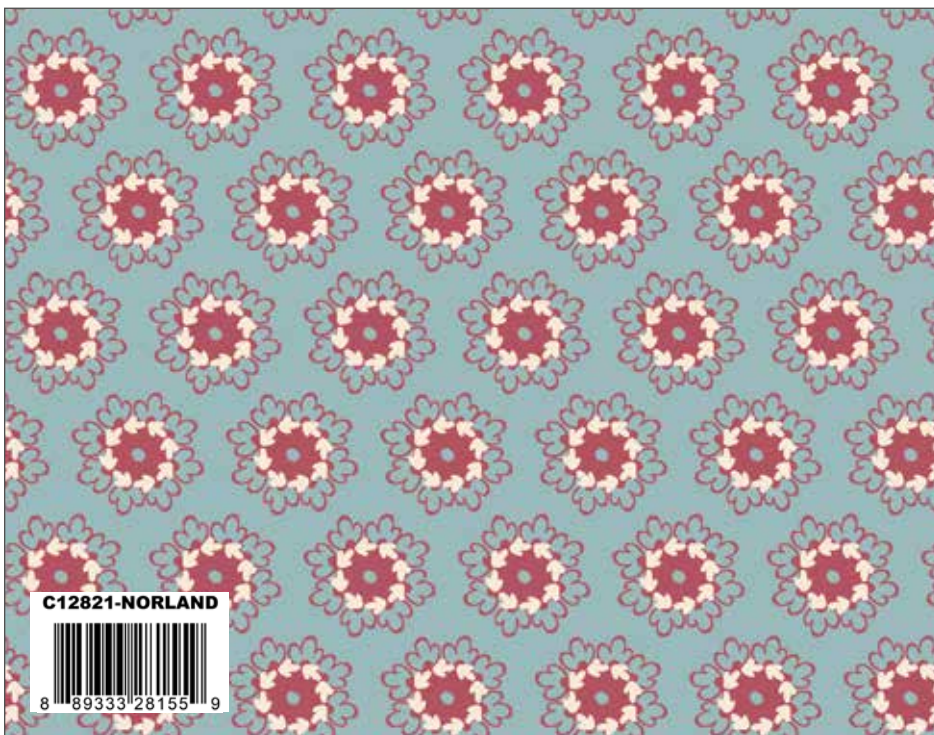
Don't forget to check out our curated collection of Jane Austen notions. As Jane Austen once said, "Nobody minds having what is too good for them." Trust us, our Jane Austen fabric collection, kits, and notions are oh-so good for you! Check them all out today. Limited quantities are available.

Riley Blake
DESIGNS

Available October 2022



Barton Cottage



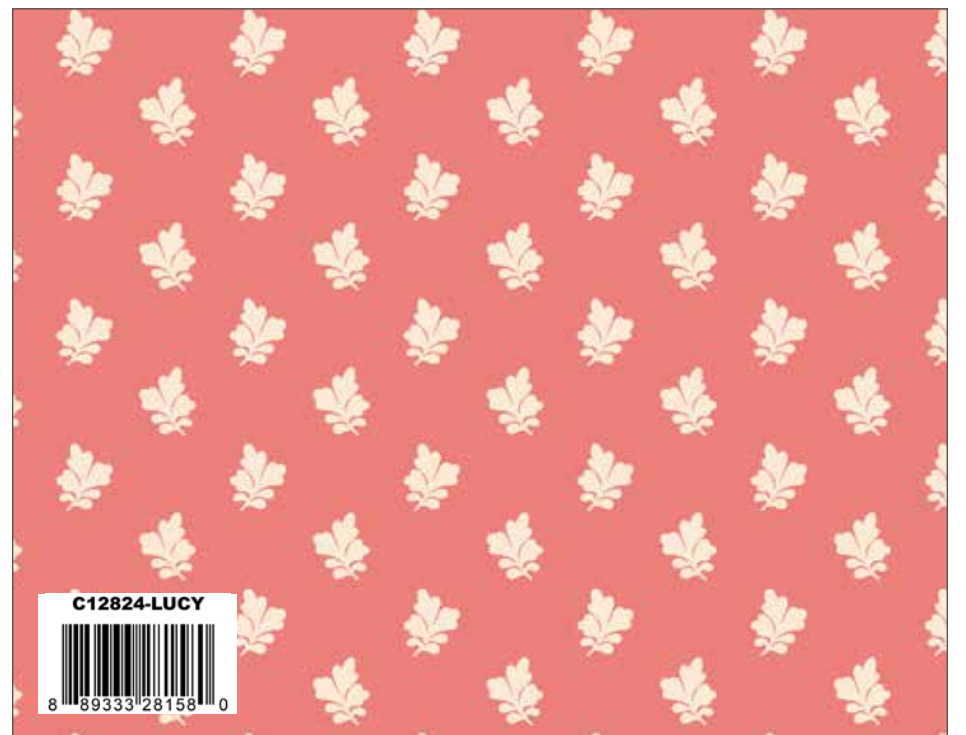
Norland Park



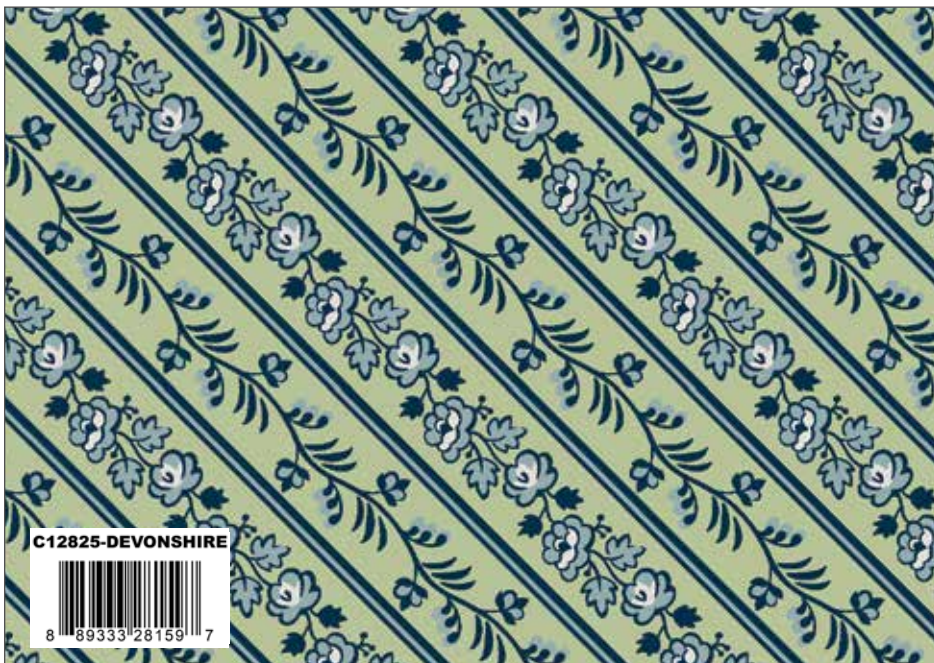
Sonnet 116



Mrs. Jennings



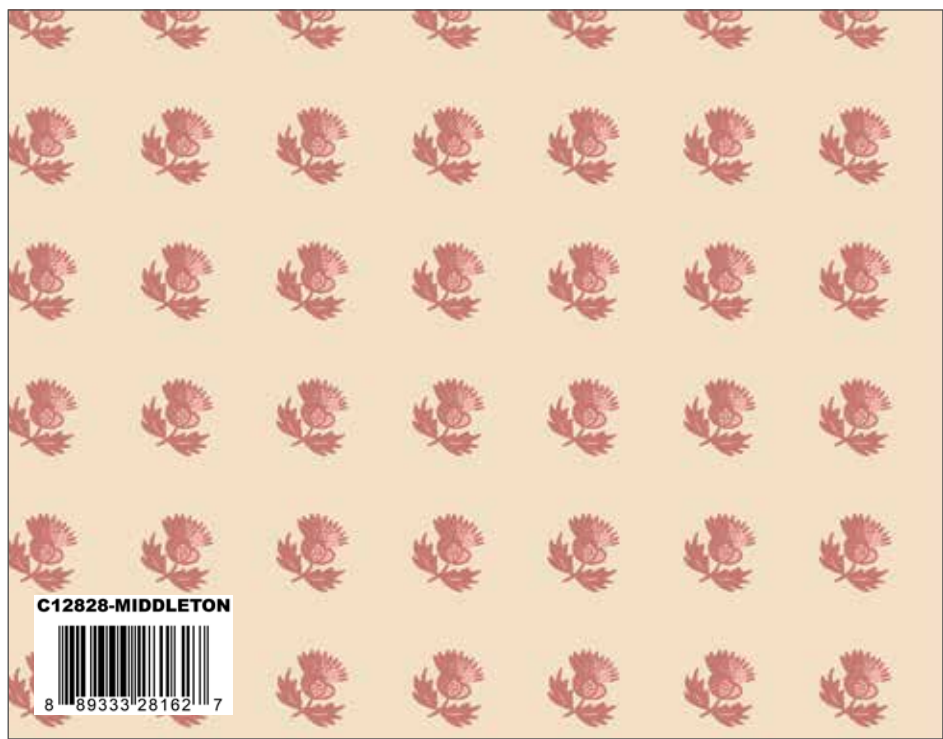
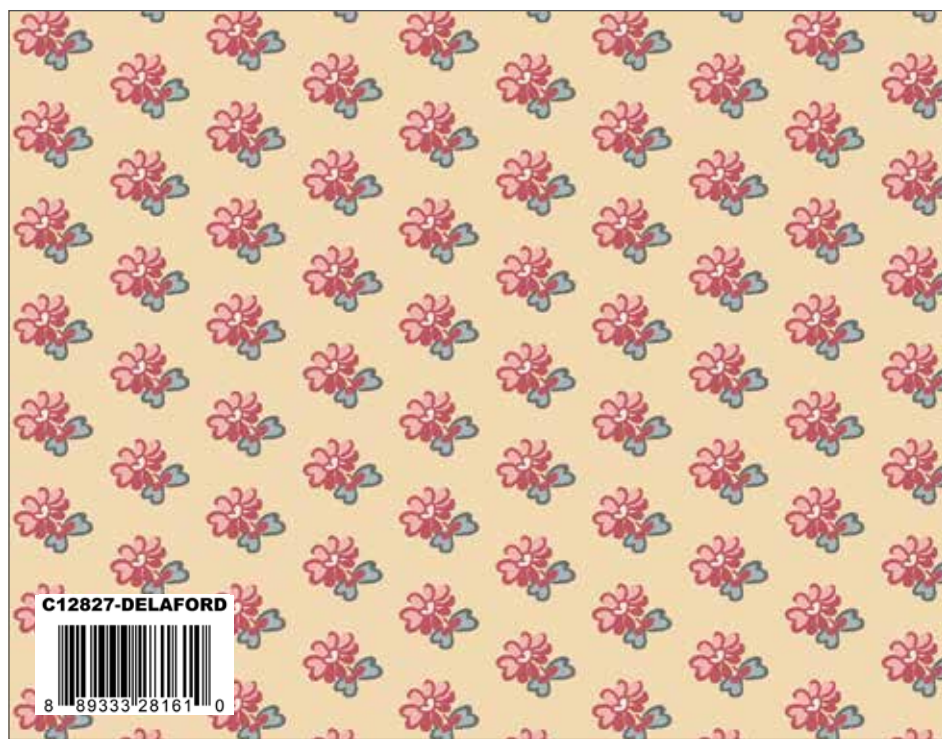
Lucy



Devonshire

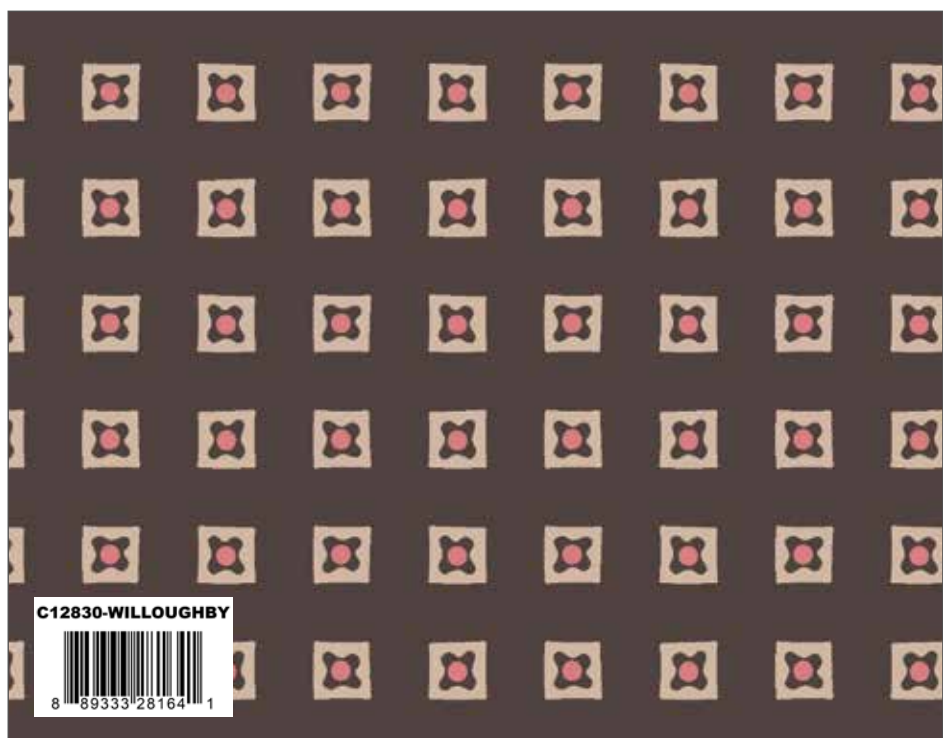
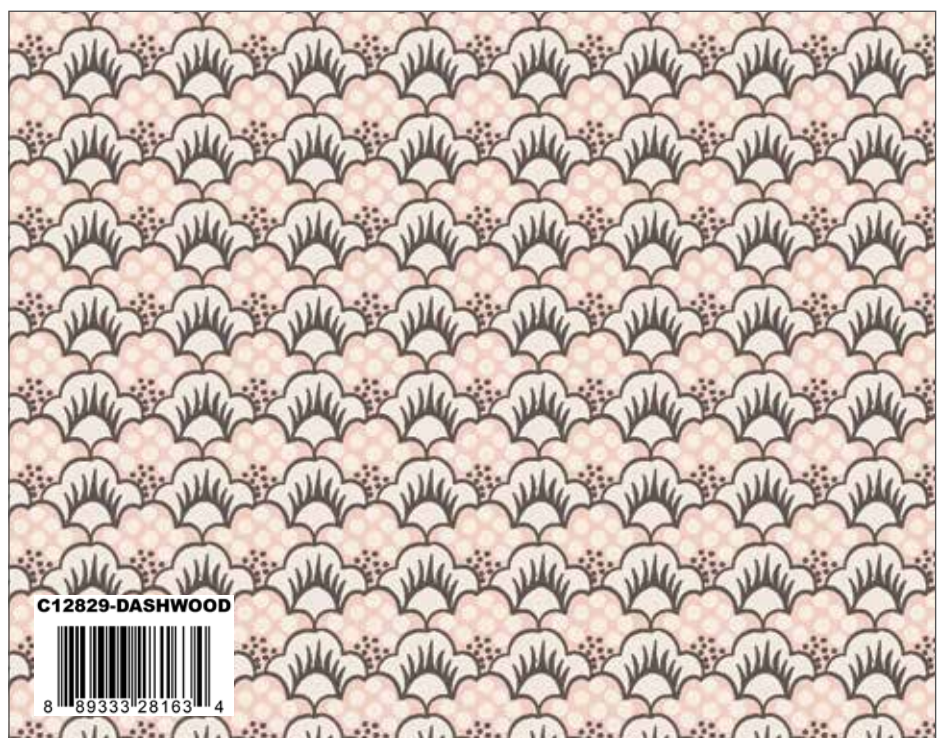


Sussex



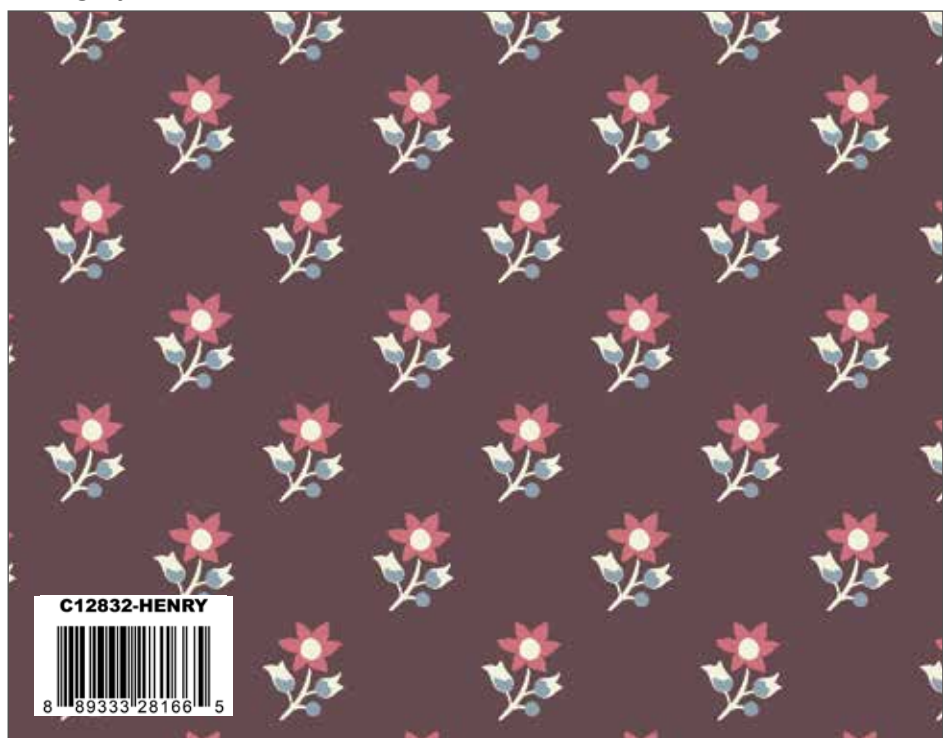
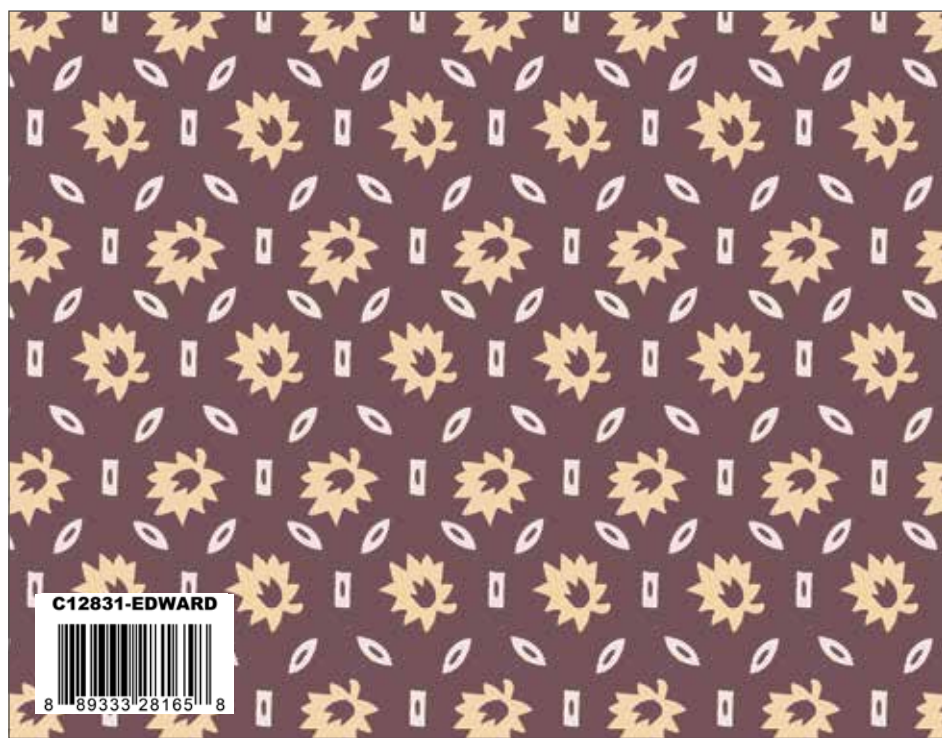
Delaford

Sir Middleton



Dashwood

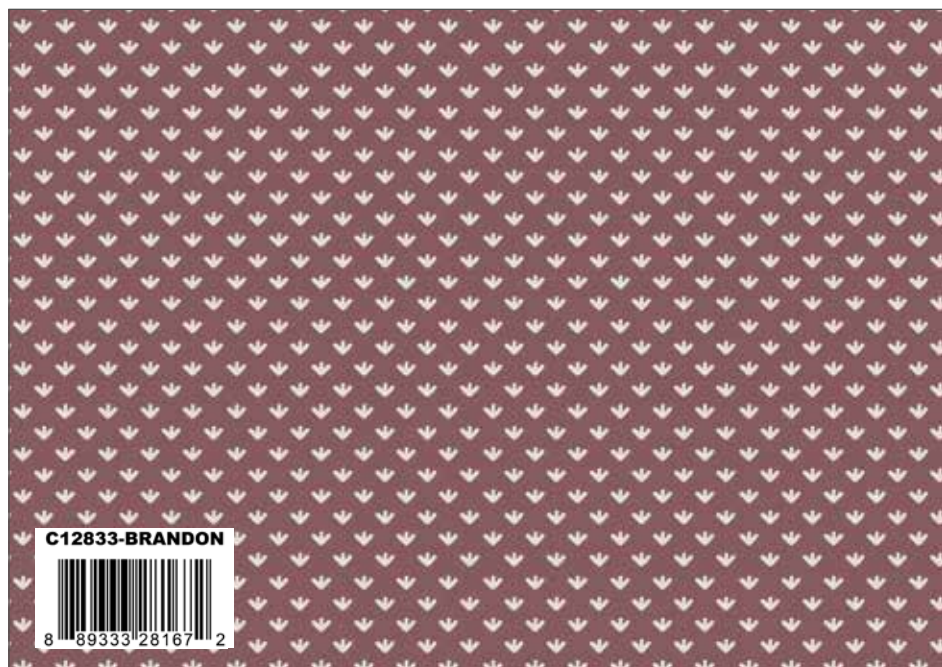
Willoughby



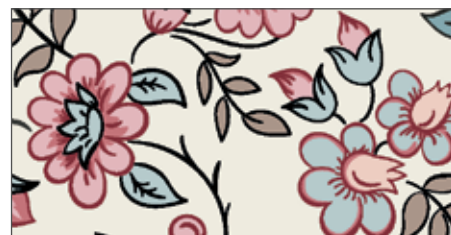
Edward

Henry

These prints are from the original *Jane Austen at Home* collection and are named after characters from *Sense and Sensibility*. These prints are included in the precuts and case packs.



Colonel Brandon



C10004 Elinor



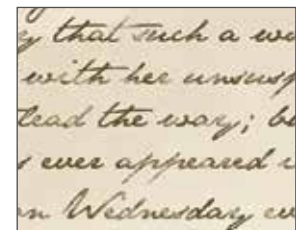
C10007 Marianne



C10010 Sophia



C10011 Margaret



C10018 Correspondence

Barton Cottage Quilt Kit



Approx. Quilt Size 65" x 65"

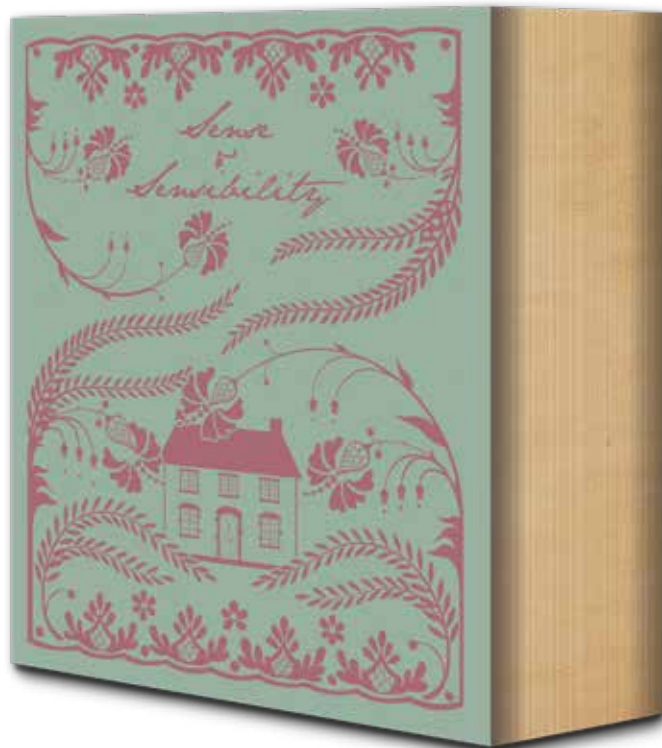
Pre-order the Barton
Cottage Quilt Kit

KT-12820

8 89333 28308 9

*Kit includes EXCLUSIVE
pattern and fabric for
quilt top and binding

Available November 2022



Box Size
Approx: 10½" x 8¾" x 3"



Elinor and Edward Quilt



Approx. Quilt Size 52" x 60"

Fabric Requirements

1 - 10-12820-42 10-inch stacker

1/2 yard C10018 Correspondence

1/2 yard C12833 Colonel Brandon

1/2 yard C12832 Henry (binding)

Free Pattern will be available at:
www.rileyblakedesigns.com/free-quilt-patterns



Available Now



Elizabeth



Georgiana



Emma



Anne



Elinor



Jane



Cassandra



Marianne



Caroline



Harriet



Sophia



Margaret



Available Now



C10012-LADYCATHERINE
8 89333 17433 2

Lady Catherine



C10013-ISABELLA
8 89333 17434 9

Isabella



C10014-FANNY
8 89333 17435 6

Fanny



C10015-PENELOPE
8 89333 17436 3

Penelope



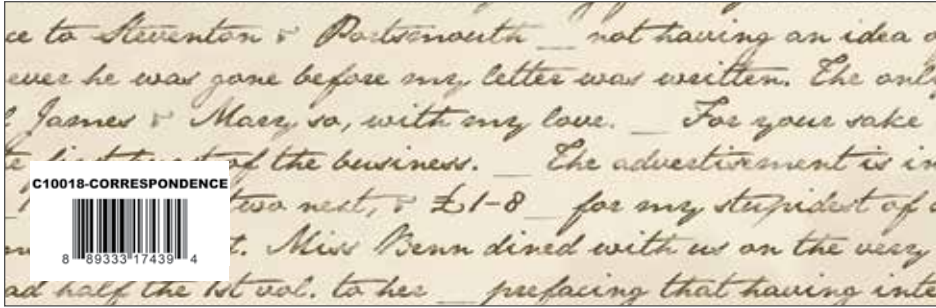
C10016-CHARLOTTE
8 89333 17437 0

Charlotte



C10017-JULIA
8 89333 17438 7

Julia



C10018-CORRESPONDENCE
8 89333 17439 4

Correspondence



C10019-NAVY
8 89333 17440 0

Navy Dot

Jane Austen Wide Back 107/108"

Jane Austen Panels

These panels are required for an accurate reproduction of the Jane Austen coverlet quilt.



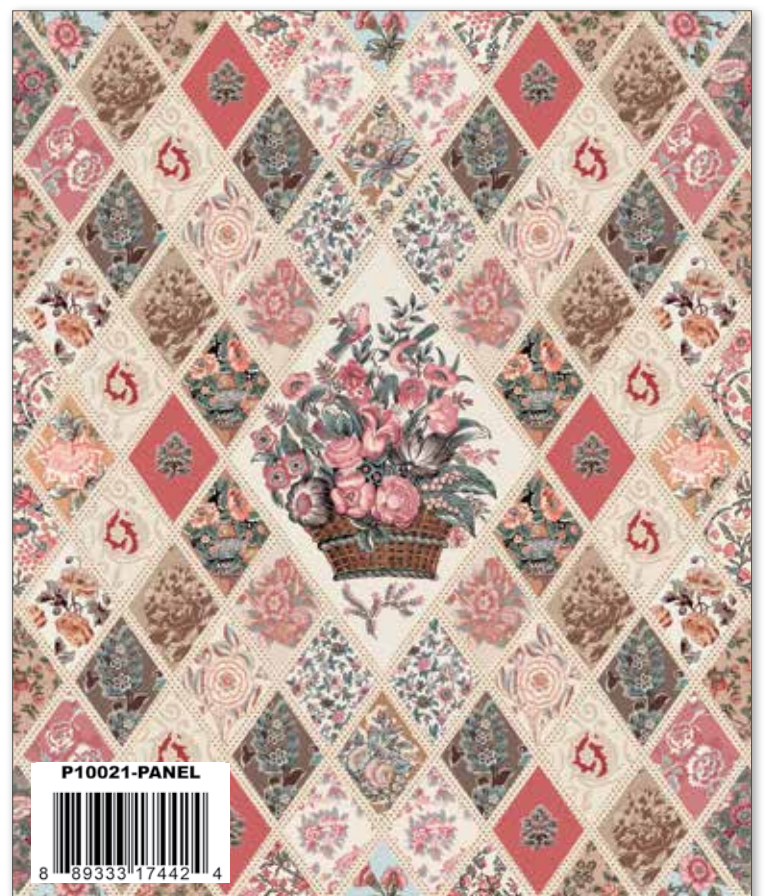
WB10020-ACCOMPLISHED
8 89333 17441 7

Accomplished Woman



P10022-PANEL
8 89333 17443 1

Jane Austen Border Panel
Actual Size is 52" x 85"

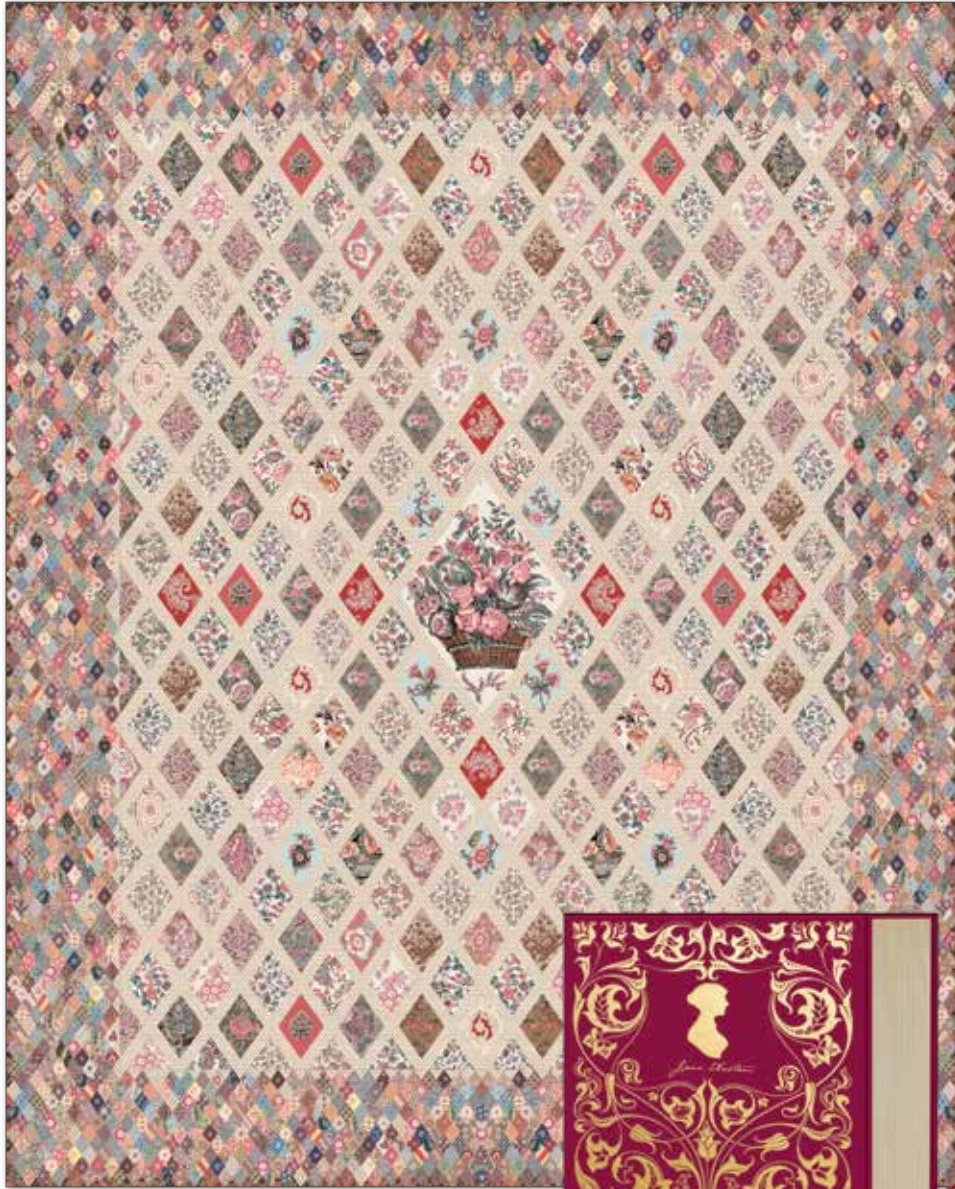


P10021-PANEL
8 89333 17442 4

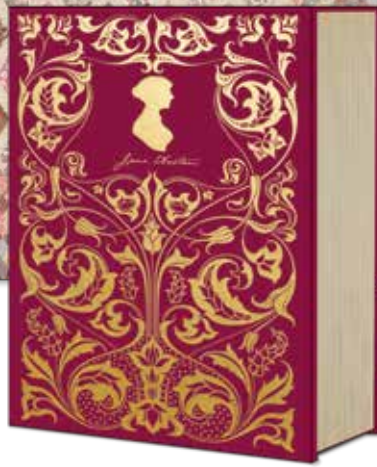
Jane Austen Diamond Panel
Actual Size is 36" x 43 1/2"

Available Now

Jane Austen Coverlet Quilt Kit



Approx. Quilt Size 80" x 100"



P120-JANE AUSTEN



Order the P120-Jane Austen Quilt Booklet

KT-17450



Order the Jane Austen Coverlet Quilt Kit

KIT INCLUDES:

- ❖ Fabric to make quilt top and binding
- ❖ Pattern
- ❖ Comes in a keepsake box.

Pillow Cover Kit



Pillow Size 20" x 20"

KIT INCLUDES:

- ❖ Fabric to make pillow top and back
- ❖ Pattern
- ❖ Comes in a keepsake box.

Pillow Kit

KT-17451



Enamel Charm



Enamel Charm

- ❖ Individually Packaged Enamel Charm with backer card
- ❖ 1" x 1.4" Charm
- ❖ Lobster Claw Clasp Closure
- ❖ Minimum Order: 5 Units

ST-15994





Available Now

Playing Cards

- ❖ Standard Playing Card Size
- ❖ Minimum Order: 5 Units

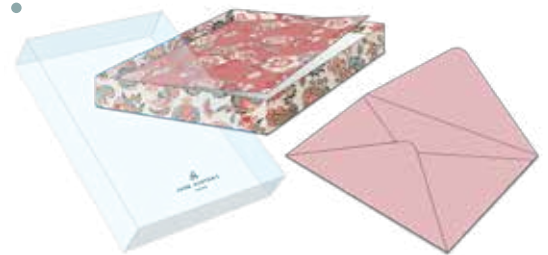
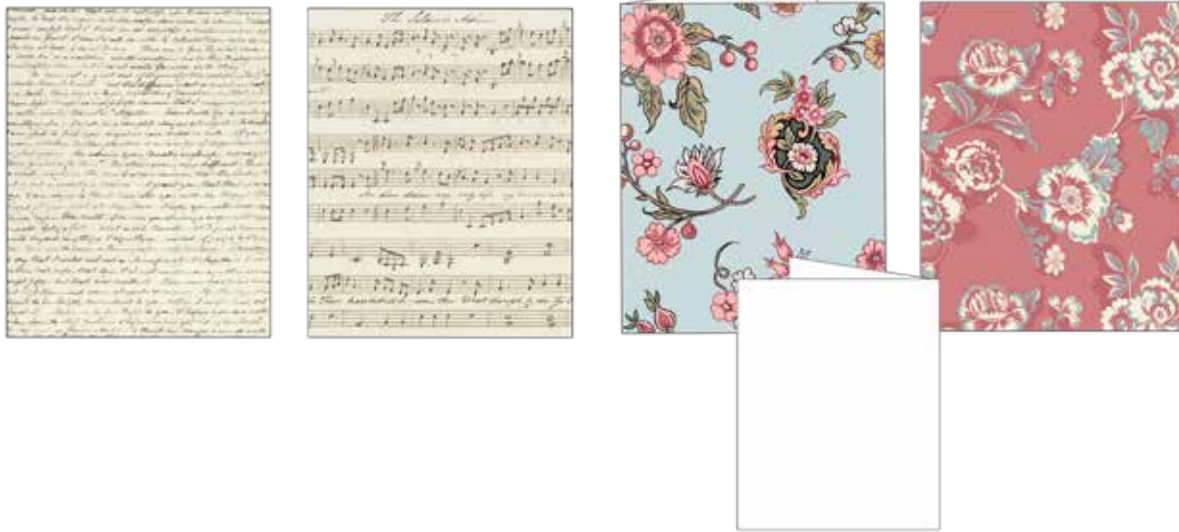


Bookmarks

- ❖ Individually Packaged in Poly Sleeves with Barcode
- ❖ 2.5" x 8.5" Bookmark
- ❖ Faux Leather Attached Ribbon
- ❖ 3 designs, 5 of each design per set
- ❖ Minimum Order: 1 Set



Greeting Cards



- ❖ 4 Designs Per Box Set
- ❖ 4" x 6" Greeting Cards
- ❖ Keepsake Storage Tray
- ❖ Package includes 12 blank cards (3 of each design) and envelopes
- ❖ Minimum Order: 5 Units



Journals



ELIZABETH

ST-16000



- ❖ Hardcover Journal with Ribbon Bookmark
- ❖ 6" x 8" Journal
- ❖ 250 Sheets Lined for Composition
- ❖ Minimum Order: 5 Units of One Design



LADY CATHERINE

ST-15999



CASSANDRA

ST-15998



E-Reader Case Kit

KIT INCLUDES:

- ❖ Fabric to make case and lining
- ❖ Batting and zipper
- ❖ Pattern
- ❖ Comes in a keepsake box



E-Reader Case Size Approx. 10" x 18"



E-Reader Kit

KT-17453





About This Line

Jane Austen's House is in the charming village of Chawton, Hampshire, UK. It is the place where Jane wrote or revised all her published novels and is visited by over 40,000 people each year, from all over the world. The House contains items that belonged to Jane, including her writing table and her ring.

One of the most popular exhibits is the quilt made by Jane, her sister Cassandra and their mother. Strictly, it is not a quilt, but a coverlet as there is no layer of wadding, simply a patchwork top with a cotton backing. It is a medallion quilt measuring 91 inches x 105 inches with a large central motif in chintz, cut as a diamond. This is surrounded by a central panel of 232 smaller diamonds interconnected by spotted sashing. The outer edge, 11 inches deep, is composed of tiny diamonds, each with edges of 30mm. There are over 2500 of these smaller diamonds in the border. All the patches are joined by very fine whip stitch – there are approximately 12 stitches per inch, which is quite remarkable given the lighting conditions of the period.

The fabrics used in the central panel are block printed dress weight fabrics and are arranged in alternating rows of darker and lighter. Those in the outer edge are a mix of block and roller printed material and include both dress and furnishing fabrics. There are many remarkable things about this quilt, aside from the fact that it was stitched by one of the world's favourite authors. The central panel of diamonds shows fourfold symmetry in their placement and the tiny diamonds in

the outer edge are also placed symmetrically with top and bottom and left and right sides matching. There is also extensive use of fussy cutting in the diamonds. This was a very carefully planned quilt. The diamonds are 70° and 110° angles, which is unusual, and the sashing joining the central diamonds is composed of short pieces, rather than continuous lengths – perhaps fabric left from a previous project? We have not found another quilt like this anywhere, it is a truly unique piece (although there are rumours of other quilts made by the Austen ladies, and this was clearly not the first quilt they had made in terms of the quality of the design).

We do not know the exact date of this quilt, but do know that the Austens were working on a quilt in May 1811, as Jane wrote in a letter to her sister, Cassandra, "Have you remembered to collect peices for the patchwork – we are at a standstill". Cassandra was staying with her brother Edward on his estate in Kent, where there would have been many fabric pieces available from the dressmaker who made clothes for his eleven children.



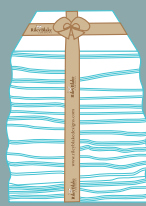
Flat Fold Bundle
25 Yards



10-Inch Stacker
42 Pieces



Fat Quarter



PRE-ORDER ONLY

ADD ANY LAMINATE WITH 100 YARDS MINIMUM

10-Yard Case Pack



15-Yard Case Pack



Precuts and case packs include C10004 Elinor, C10007 Marianne, C10010 Sophia, C10011 Margaret, & C10018 Correspondence from the original Jane Austen at Home collection.

Available October 2022

100% FINE COTTON 43/44" WIDE • MACHINE WASH COLD • NO CHLORINE BLEACH • TUMBLE DRY LOW • REMOVE PROMPTLY

Riley Blake Designs • 9646 South 500 West, Sandy, Utah 84070

Toll Free 1.888.768.8454 • Tel 801.816.0540 • Fax 801.816.0542

www.rileyblakedesigns.com

Not intended for children's sleepwear

©2022 Riley Blake Designs and Jane Austen's House

MADE IN KOREA